

**COUNTY OF LOS ANGELES  
ROAD DEPARTMENT**

**PRECISE  
BENCH MARK LIST**



**BELLFLOWER QUAD**

**LAKWOOD QUAD**

**SOUTH GATE QUAD**

**1980 ADJUSTMENT**

P R E F A C E  
1980 Adjustment

The Road Department level net published in 1975 consisted of more than 1500 miles of levels supporting in excess of 18,000 bench marks. For reasons of economy, this 1980 adjustment is reduced to about 55% of the bench marks previously published. Reductions were made by increasing the spacing between level lines in unincorporated territory, and eliminating lines in non-contract cities and areas where the probability of future engineering projects appears slight. The 1980 adjustment is an update of the remainder of the 1975 bench marks, not including baselines. Data from previous adjustments is available without inferring any responsibility for the current reliability of the data or the actual existence of the bench marks. Elevations of bench marks with the same quad name, but different adjustment dates, are not normally compatible.

To facilitate the adjustment, indexing, and distribution of adjusted values of the net, the County territory is divided into 34 quads or areas. For identification purposes each quad is given a name, viz., "Rosemead," "La Mirada," "Santa Fe," etc. When bench marks and elevations in the Road Department net are used, the name of the quad in which the bench mark is located and the date of the elevation adjustment must be included in the bench mark description, e.g.,

CY 6901 - RDEM TAG S CB 11FT E BCR @ SE COR LA CIENEGA  
BLVD & LENNOX BLVD 32FT S & 73FT E C/L INT  
(HAWTHORNE - 1980) ELEV. 82.549

The precision of the net is reflected by an indicated field probable error of plus or minus 0.012 foot per mile of leveling as determined from over 300 conditions of closure. However, many years experience in vertical control in the greater Los Angeles basin and Antelope Valley indicate that because of varying degrees of subsidence and heaving, the true datum is recovered only by obtaining substantial agreement between a number of bench marks.

The users of this net are invited to assist in its maintenance by notifying this Department of cases of obliteration, apparent mistakes in descriptions or elevations, and proven disturbance of bench marks.

---

DATUM: U. S. Coast and Geodetic Survey Sea Level Datum  
of 1929, through the medium of the Los Angeles  
County Engineer Precise Level Net.

ABBREVIATIONS USED IN BENCH MARK LISTINGS

ABUT - - - - -	Abutment	EC - - - - -	End of Curve
ALG - - - - -	Along	ENT - - - - -	Entrance
ANG PT - - - - -	Angle Point	FL - - - - -	Floor
E/W - - - - -	Back of Walk	FTG - - - - -	Footing
BCR - - - - -	Beginning of Curb Return	FRWY - - - - -	Freeway
BC - - - - -	Beginning of Curve	F/W - - - - -	Front of Walk
BLDG - - - - -	Building	GAR - - - - -	Garage
BM - - - - -	Bench Mark	HDWL - - - - -	Headwall
BT SPK - - - - -	Boat or Bolt Spike	HSE - - - - -	House
BR CAP - - - - -	Brass or Bronze Cap	HWY - - - - -	Highway
C B - - - - -	Catch Basin	INT - - - - -	Intersection
CTR - - - - -	Center	IP - - - - -	Iron Pipe
C/L - - - - -	Center Line	LT - - - - -	Left
C/L INT - - - - -	Center Line Intersection	LACE - - - - -	L. A. City Engineer
C/L PROD - - - - -	Center Line Produced	LACS - - - - -	L. A. Co. Engineer
CONC - - - - -	Concrete	LAFC - - - - -	L. A. Co. Flood Control
COR - - - - -	Corner	L&BN - - - - -	Lead and Bench Nail
COE - - - - -	Corps of Engineers	L&BR - - - - -	Lead and Brad
CULV - - - - -	Culvert	L&N - - - - -	Lead and Nail
CYN - - - - -	Canyon	L&SPK - - - - -	Lead and Spike
CB - - - - -	Curb	L&T - - - - -	Lead and Tack
CS MON - - - - -	Co. Engineer Monument	MCR - - - - -	Middle of Curb Return
CT SPK - - - - -	Cut Spike	MKD - - - - -	Marked
DR - - - - -	Drive or Driveway	MC - - - - -	Middle of Curve
E/O - - - - -	East of	MON - - - - -	Monument
ECR - - - - -	End of Curb Return	N/O - - - - -	North of

ABBREVIATIONS USED IN BENCH MARK LISTINGS . . . CONTINUED

NR - - - - - Near  
OPP - - - - - Opposite  
PI - - - - - Point of Intersection  
PK&W - - - - - PK Nail and Washer  
P/L - - - - - Property Line  
POST - - - - - Point on Semi-Tangent  
PP - - - - - Power Pole  
PVMT - - - - - Pavement  
PROD - - - - - Produced  
RD - - - - - Road  
RDEM - - - - - Road Dept. Bench Mark  
RDEM TAG - - - - - Road Dept. Bench Mark Tag  
RR - - - - - Railroad  
RT - - - - - Right  
R/W - - - - - Right of Way  
SDMH - - - - - Storm Drain Manhole  
SMH - - - - - Sewer Manhole  
SPK - - - - - Spike  
ST&W - - - - - Spike Tin and Washer  
S/O - - - - - South of  
TP - - - - - Telephone Pole  
USC&GS - - - - - U. S. Coast and Geodetic Survey  
USGS - - - - - U. S. Geological Survey  
WK - - - - - Walk  
W/O - - - - - West of

QUAD

NORWALK

QUAD

QUAD

ESSIA

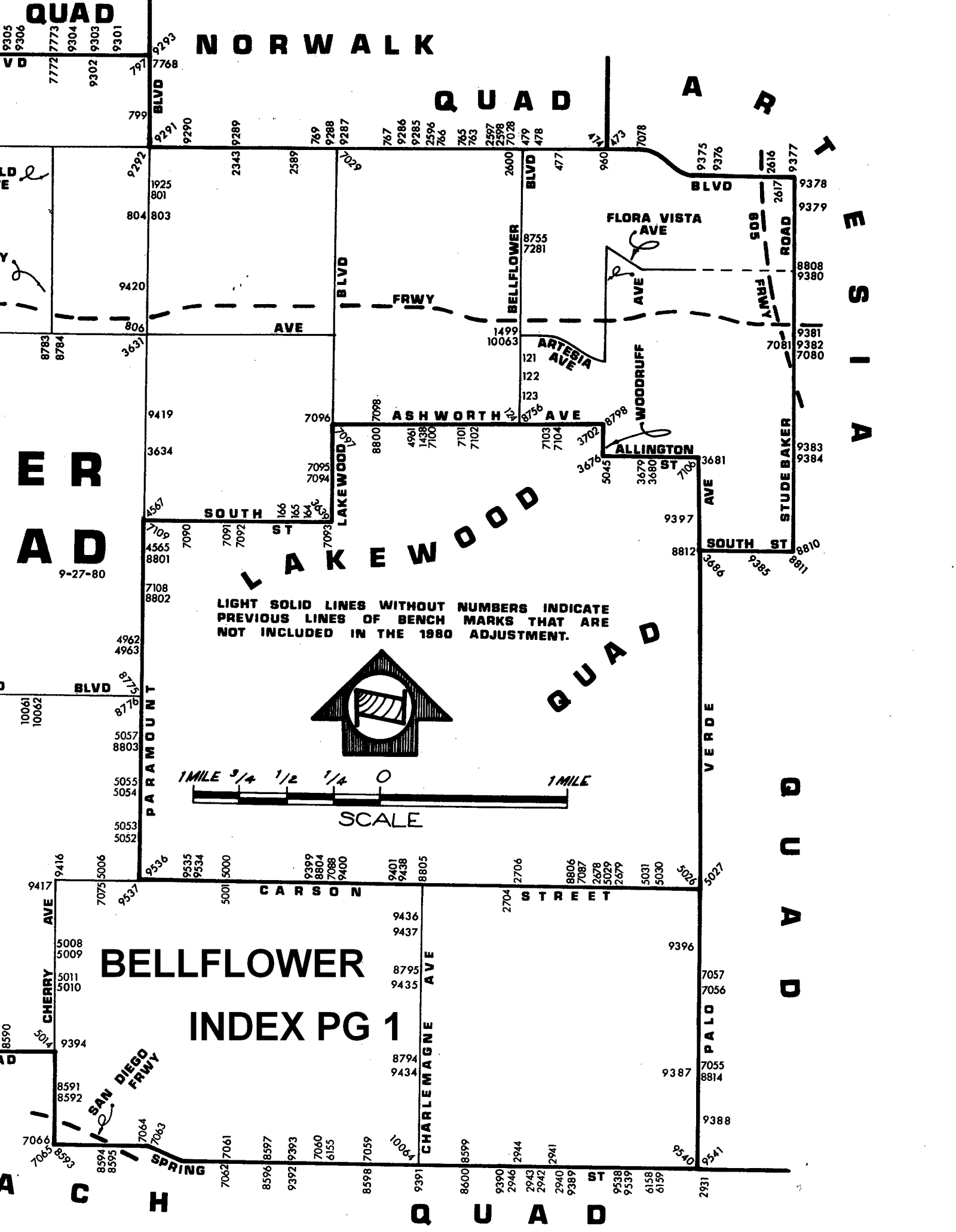
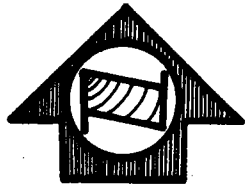
ER  
AD  
9-27-80

LAKWOOD

QUAD

QUAD

LIGHT SOLID LINES WITHOUT NUMBERS INDICATE PREVIOUS LINES OF BENCH MARKS THAT ARE NOT INCLUDED IN THE 1980 ADJUSTMENT.



BELLFLOWER

INDEX PG 1

ACH

QUAD

VERDE

STREET

PALO

ST

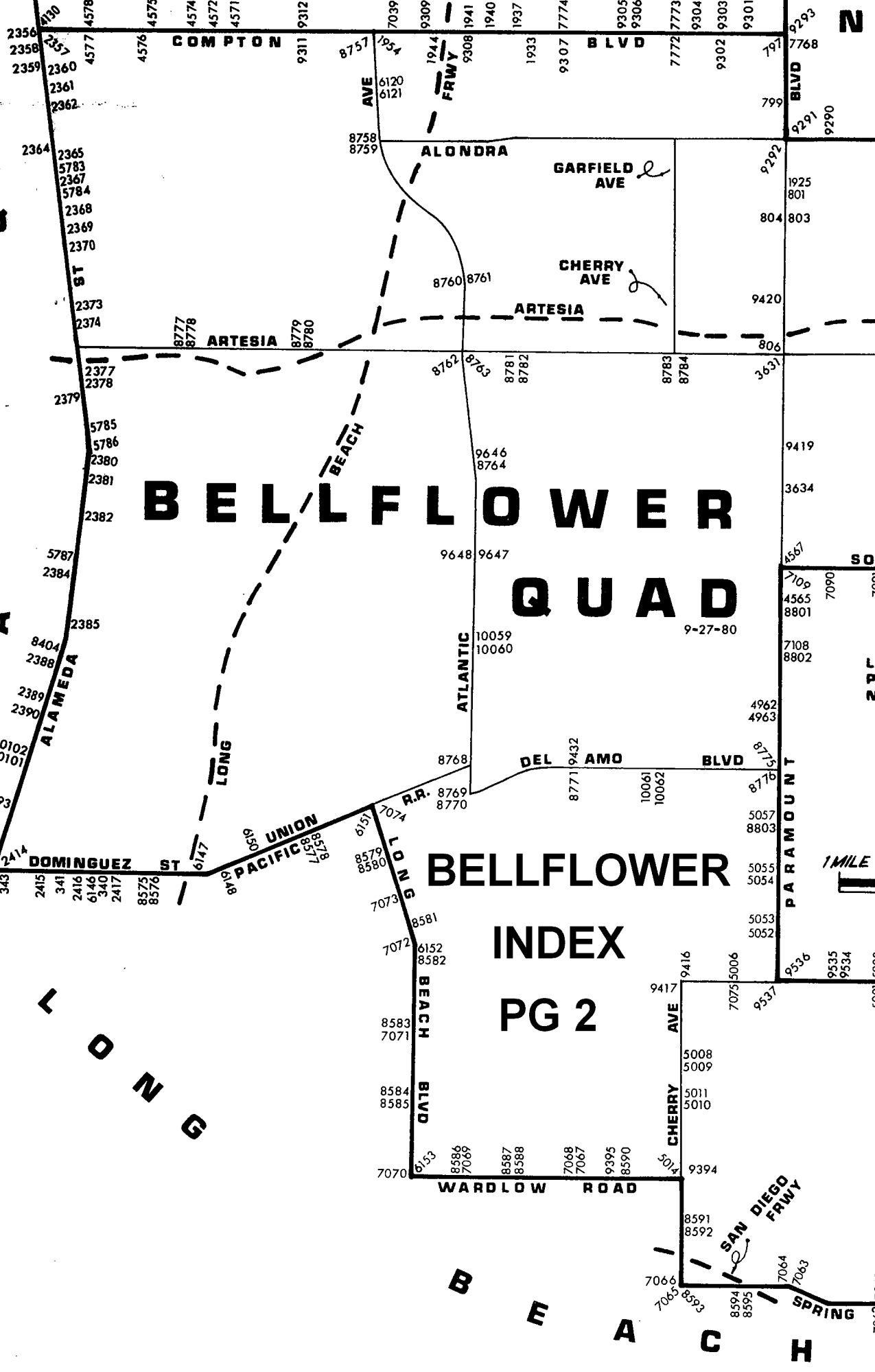
9541

2931

9305  
9306  
7772  
7773  
9304  
9302  
9303  
9301  
791  
7768  
799  
9291  
9290  
9289  
769  
9288  
9287  
767  
9286  
9285  
2596  
766  
765  
763  
2597  
2598  
7028  
479  
478  
960  
473  
7078  
9375  
9376  
2616  
2617  
9377  
9378  
9379  
8808  
9380  
9381  
9382  
7081  
7080  
9383  
9384  
8812  
8810  
8811  
3686  
9385  
3681  
9397  
7108  
8802  
4962  
4963  
8775  
8776  
10061  
10062  
5057  
8803  
5055  
5054  
5053  
5052  
9416  
5006  
9337  
9336  
9335  
9334  
5000  
9399  
8804  
7088  
9400  
9401  
9438  
8805  
2706  
8806  
7087  
2678  
5029  
2679  
5031  
5030  
5026  
5027  
9417  
5008  
5009  
5011  
5010  
9394  
8591  
8592  
7066  
7063  
8594  
8595  
7062  
7061  
8596  
8597  
9392  
9393  
7060  
6155  
8598  
7059  
9391  
8600  
8599  
9390  
2946  
2944  
2943  
2942  
2940  
9389  
9388  
9338  
9339  
6158  
6159  
9540  
9541  
9387  
9388  
9389  
9390  
9391  
9392  
9393  
9394  
9395  
9396  
9397  
9398  
9399  
9400  
9401  
9402  
9403  
9404  
9405  
9406  
9407  
9408  
9409  
9410  
9411  
9412  
9413  
9414  
9415  
9416  
9417  
9418  
9419  
9420  
9421  
9422  
9423  
9424  
9425  
9426  
9427  
9428  
9429  
9430  
9431  
9432  
9433  
9434  
9435  
9436  
9437  
9438  
9439  
9440  
9441  
9442  
9443  
9444  
9445  
9446  
9447  
9448  
9449  
9450  
9451  
9452  
9453  
9454  
9455  
9456  
9457  
9458  
9459  
9460  
9461  
9462  
9463  
9464  
9465  
9466  
9467  
9468  
9469  
9470  
9471  
9472  
9473  
9474  
9475  
9476  
9477  
9478  
9479  
9480  
9481  
9482  
9483  
9484  
9485  
9486  
9487  
9488  
9489  
9490  
9491  
9492  
9493  
9494  
9495  
9496  
9497  
9498  
9499  
9500

**SOUTH GATE QUAD**

**GARDENA QUAD**



**BELLFLOWER QUAD**

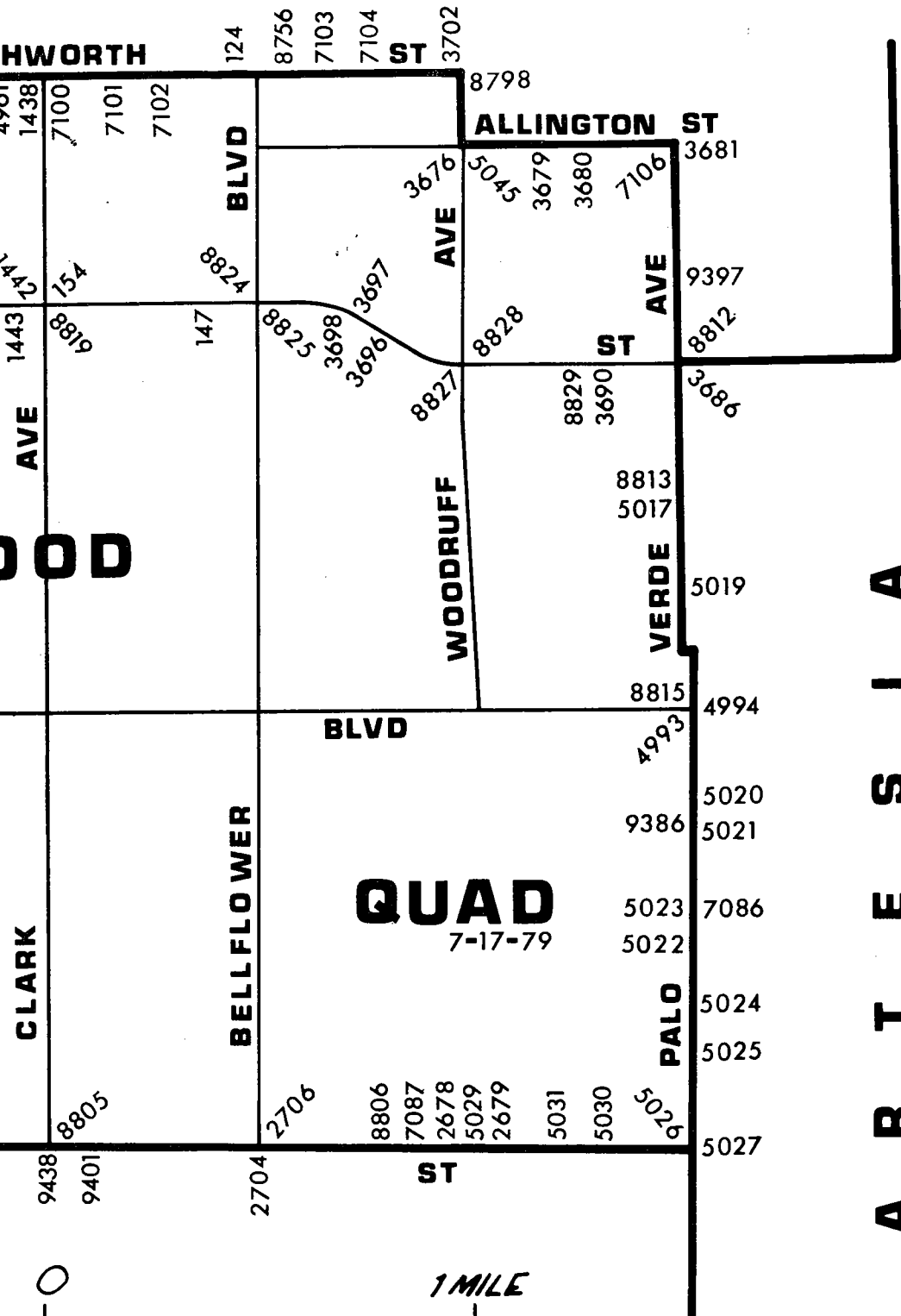
**BELLFLOWER INDEX PG 2**



**A D**

**Q U A D**

**A R T E S I A**



SCALE

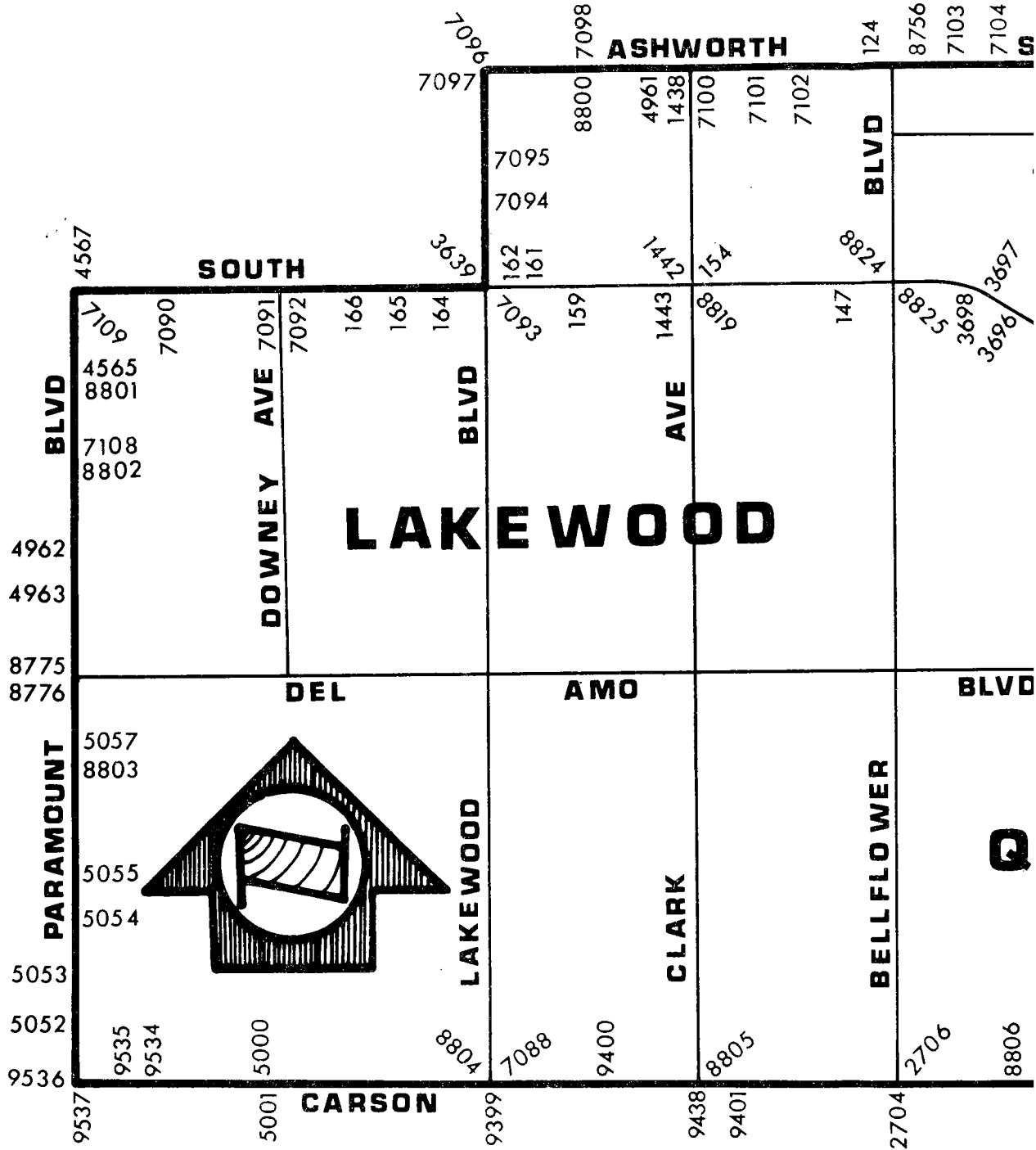
**LAKWOOD**

**INDEX PG 1**

WITHOUT NUMBERS INDICATE BENCH MARKS THAT ARE THE 1980 ADJUSTMENT.

# Q U A D

**B E L L F L O W E R**



1 MILE  $\frac{3}{4}$   $\frac{1}{2}$   $\frac{1}{4}$  0



**LAKWOOD**

**SCALE**

**INDEX PG 2**

LIGHT SOLID LINES WITHOUT NUMBERS AND PREVIOUS LINES OF BENCH MARKS THAT NOT INCLUDED IN THE 1980 ADJUSTMENT



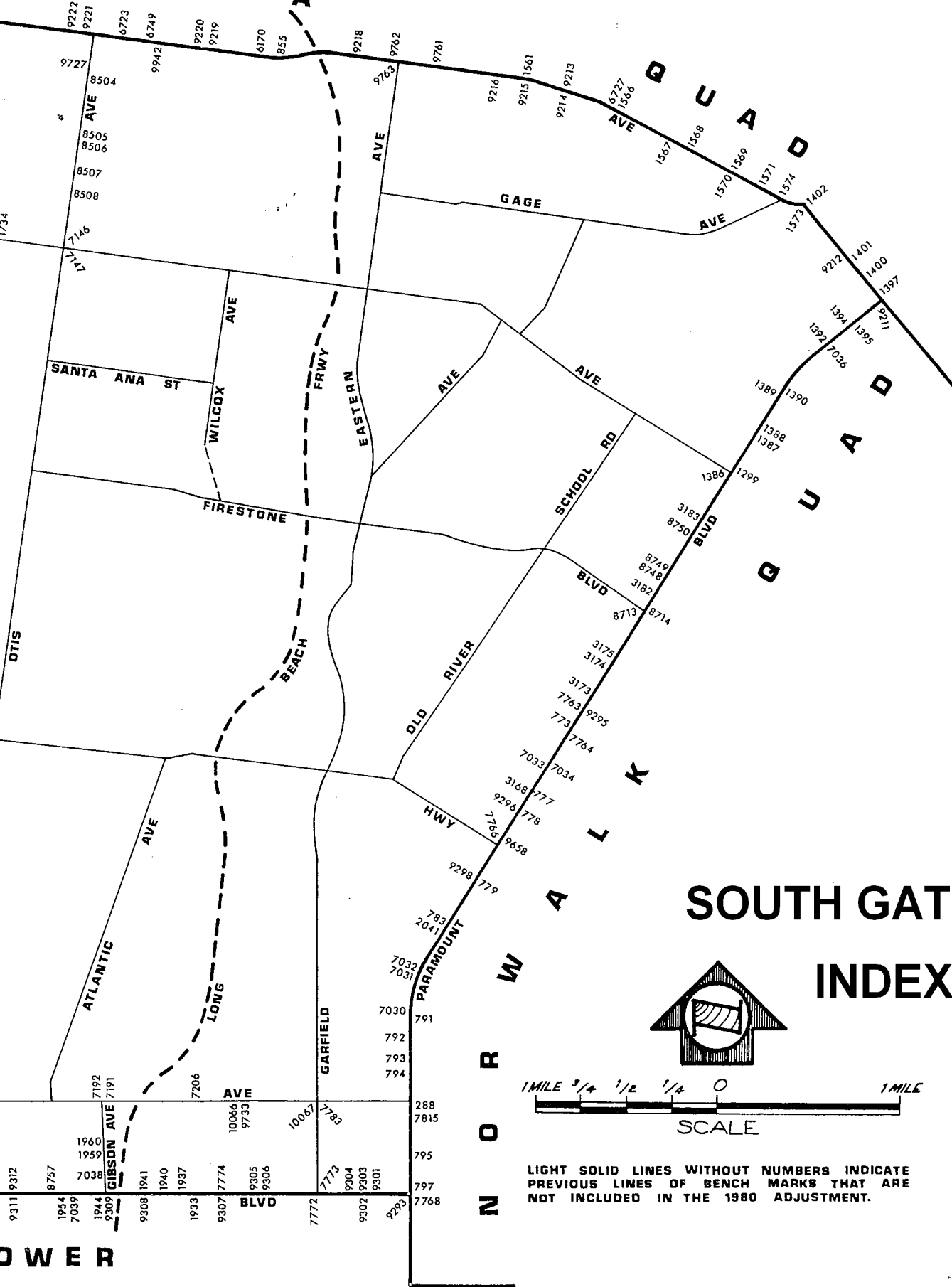
RIVERA

QUAD

QUAD

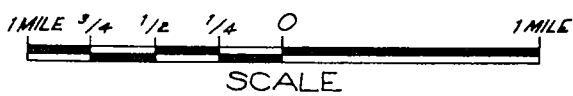
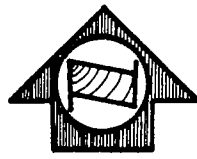
NORWALK

QUAD



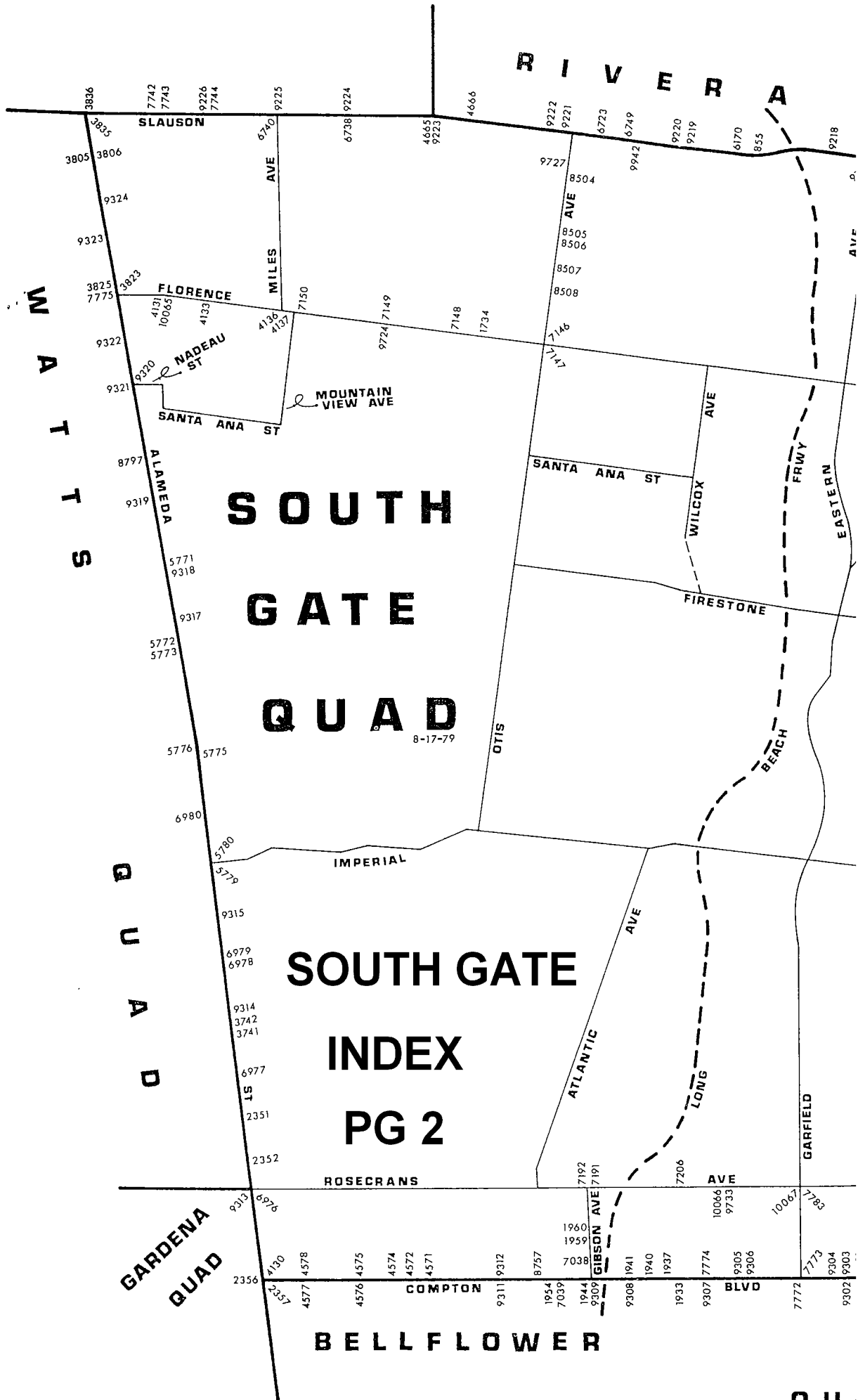
# SOUTH GATE

# INDEX PG 1



LIGHT SOLID LINES WITHOUT NUMBERS INDICATE PREVIOUS LINES OF BENCH MARKS THAT ARE NOT INCLUDED IN THE 1980 ADJUSTMENT.

J W E R



08/09/79

LOS ANGELES COUNTY ROAD DEPARTMENT  
SURVEY SECTION

PAGE 1

QUAD-YEAR	ELEV	DESCRIPTION (INCLUDE QUAD AND YEAR IN DESCRIPTION)	BM NUMBER
BELLFLWR (1980)	63.536	FCBM 2FT N BCR @ NE COR BELLFLOWER BLVD & RAMONA ST 42FT N & 42FT E/O C/L INT MKD (74-19C)	CY 121
BELLFLWR (1980)	61.813	L&BN 1FT N CB RET @ NW COR CEDAR AVE & BELLFLOWER BLVD 36FT N & 42FT W C/L INT	CY 122
BELLFLWR (1980)	60.236	L&SPK 5FT N/O BCR @ NW COR ROSE ST & BELLFLOWER BLVD 40FT N & 42FT W C/L INT	CY 123
BASELINE (1975)	59.101	L&T 1FT W CB RET @ NW COR ASHWORTH ST & BELLFLOWER BLVD 18FT N & 62FT W/O C/L INT	CY 124
LAKWOOD (1980)	54.865	BT SPK E CB AUTRY AVE 85FT N C/L SOUTH ST & 16FT E/O C/L AUTRY AVE MKD ( BM LC 99 )	CY 147
LAKWOOD (1980)	53.482	FC MON N CB SOUTH ST 52FT N C/L & 58 E C/L CLARK AVE MKD (BM 74-504)	CY 154
LAKWOOD (1980)	54.180	L&T N CB SERVICE RD 8FT W BCR @ NW COR GRAYWOOD AVE & SOUTH ST 80FT N & 48FT W C/L INT	CY 159
LAKWOOD (1980)	54.377	L & T 10FT W BCR @ NW COR BLACKTHORNE AVE & SOUTH ST 80FT N & 50FT W C/L INT	CY 161
LAKWOOD (1980)	54.056	L&T N CB SERVICE RD 5FT W BCR @ NW COR BONFAIR AVE & SOUTH ST 80FT N & 50FT W C/L INT	CY 162
BASELINE (1975)	53.366	L&T W CB 1FT N CB RET @ NW COR OLIVA AVE & SOUTH ST 110FT N & 20FT W C/L INT	CY 164
BASELINE (1975)	52.975	L&T N CB SERVICE RD 2FT W CB RET @ NW COR CASTANA AVE & SOUTH ST 89FT N & 57FT W C/L INT	CY 165
BASELINE (1975)	52.636	L&T N CB SERVICE RD 1FT W CB RET @ NW COR HAYTER AVE & SOUTH ST 89FT N & 56FT W C/L INT	CY 166
BASELINE (1975)	73.432	4.5 IN IP WITH L&T 6IN BACK WK CN SE COR PARAMOUNT BLVD & ROSECRANS AVE 244FT S C/L 50FT E C/L INT MKD (LAC 32)	CY 288
BASELINE (1975)	32.706	L&T CTR CB RET @ SW COR SANTA FE AVE & DOMINGUEZ ST	CY 340
BASELINE (1975)	31.352	L&SPK 5FT S CB RET @ SE COR PROSPECT AVE & DOMINGUEZ ST 38FT S & 15FT E/O C/L INT	CY 341
BASELINE (1975)	31.424	L & T IN S CB 30FT W C/L ALLEY 20FT S <b>OUT</b> E C/L INT ALAMEDA ST & DOMINGUEZ ST (E 341)	CY 343
BASELINE (1975)	37.260	L&T NW COR SP SIGNAL SWITCH BOX NO 4972 35FT S C/L DEL AMO BLVD & 25FT E C/L MAIN LINE SPRR	CY 371

08/09/79

LOS ANGELES COUNTY ROAD DEPARTMENT  
SURVEY SECTION

PAGE 2

QUAD-YEAR	ELEV	DESCRIPTION (INCLUDE QUAD AND YEAR IN DESCRIPTION)	BM NUMBER
BASELINE (1975)	73.117	CS REF MON IN WELL 14IN DN ON NE COR ALONDRA BLVD & WOODRUFF AVE 56FT N & 60FT E/O C/L INT MKD (CLEARWATER K 2A)	CY 473
BASELINE (1975)	73.744	CSBM MON FL ON NW COR ALONDRA BLVD & WOODRUFF AVE 39FT N & 180FT W C/L INT MKD (BM 6-6A1958)	CY 474
BASELINE (1975)	74.723	L&N 18FT E C/L ENCALYPTUS AVE & 80FT S C/L ALONDRA BL	CY 477
BASELINE (1975)	75.185	L & T 15FT E C/L LEAHY AVE & 80FT N C/L ALONDRA BL	CY 478
BASELINE (1975)	75.165	L & T 15FT W C/L LEAHY AVE & 80FT N C/L ALONDRA BL	CY 479
BASELINE (1975)	71.783	L&T 2FT W CB RET NW COR RYON AVE & ALONDRA BLVD 38FT N & 32FT W C/L INT	CY 763
BASELINE (1975)	73.661	L&BN S CB ALONDRA BLVD 6IN E CB RET @ SE COR ALONDRA BLVD & PACIFIC AVE 70FT W PERR	CY 765
BASELINE (1975)	68.586	L & SPK 4FT E CB RET @ NE COR CLARK AVE & ALONDRA BLVD	CY 766
BASELINE (1975)	69.592	L&T C/L INT VIRGINIA DR & ALONDRA BLVD	CY 767
BASELINE (1975)	68.374	L&T C/L INT PITTS AVE & ALONDRA BLVD	CY 769
BASELINE (1975)	108.417	L&SPK IN WK 55FT N/O C/L COLE ST & 50FT W/O C/L PARAMOUNT BLVD MKD ( C-31 )	CY 773
BASELINE (1975)	104.856	L&T 14FT E C/L PARAMOUNT BLVD 11FT N C/L SPRINGER ST PRCD IN CONC PVMT	CY 777
BASELINE (1975)	103.961	L&T IN CONC 14FT E C/L PARAMOUNT BLVD 4FT N C/L QUILL DR PRCD	CY 778
BASELINE (1975)	90.416	L & T 1FT N BCR @ NE COR PARAMOUNT BLVD & ADREE AVE 58FT N & 38FT E C/L INT	CY 779
BASELINE (1975)	82.561	CS MON 16FT W & 5FT S INT PARAMOUNT BLVD & GARDENDALE ST	CY 783
BASELINE (1975)	77.754	L & T 10FT S BCR INTO CB RET @ NE COR PARAMOUNT BLVD & CENTURY BLVD 2FT N & 41FT E C/L INT	CY 791
BASELINE (1975)	76.271	BT SPK 1FT S BCR @ SW COR PARAMOUNT BLVD & PEARLE ST 32FT S & 38FT W C/L INT MKD (H-110)	CY 792

QUAD-YEAR	ELEV	DESCRIPTION (INCLUDE QUAD AND YEAR IN DESCRIPTION)	BM NUMBER
BASELINE (1975)	75.489	BT SPK BCR @ SW COR PARAMOUNT BLVD & HOWE ST 30FT S & 38FT W C/L INT	CY 793
BASELINE (1975)	76.316	BT SPK CTR CB RET @ NW COR PARAMOUNT BLVD & ROSE ST 18FT N & 40FT W C/L INT MKD (H 112)	CY 794
BASELINE (1975)	71.548	L & T IN CB 38FT W C/L PARAMOUNT BLVD ON THIRD ST C/L PROD	CY 795
BASELINE (1975)	72.315	CS MON 17FT W C/L PARAMOUNT BLVD ON C/L COMPTON BLVD MKD ( RE 2177 CLEARWATER)	CY 797
BASELINE (1975)	68.556	L&T W CB PARAMOUNT BLVD 2FT N CB RET @ NW COR MADISON ST & PARAMOUNT BLVD	CY 799
BELLFLWR (1980)	65.979	SPK NR C/L PARAMOUNT BLVD 28FT N C/L JACKSON ST	CY 801
BELLFLWR (1980)	65.586	L&T E CB 5FT N BCR @ NE COR PARAMOUNT BLVD & 70TH ST 57FT N & 33FT E C/L INT	CY 803
BELLFLWR (1980)	65.267	CITY OF LONG BEACH MON IN WELL 6IN DN @ OR NR C/L INT PARAMOUNT BLVD & 70TH ST ( USE W EDGE) MKD (1961)	CY 804
BELLFLWR (1980)	60.785	L&T CTR CB RET 6IN E L&BRAD @ NW COR ARTESIA BLVD & PARAMOUNT BLVD	CY 806
BASELINE (1975)	157.771	U S E D L&N W END N HDWL LA RIVER BRIDGE NO 2305 ON SLAUSON AVE 29FT N/O C/L SLAUSON AVE	CY 855
BASELINE (1975)	73.494	L&T IN S CB ALONDRA BLVD 1FT E INTO RET 68FT W C/L WOODRUFF AVE & 38FT S/O C/L ALONDRA BLVD	CY 960
BASELINE (1975)	125.802	RDBM TAG N CB 1FT E BCR @ NE COR PARAMOUNT BLVD & FLORENCE AVE 40FT N & 68FT E C/L INT	CY 1299
BASELINE (1975)	124.480	CS BR CAP CONC MON IN WELL @ C/L INT PARAMOUNT BLVD & FLORENCE AVE	CY 1386
BASELINE (1975)	127.200	L & BRAD CTR CB RET SE COR LUBEC ST & PARAMOUNT BLVD 25FT S & 52FT E C/L INT	CY 1387
BASELINE (1975)	127.420	L & BRAD CTR CB RET NE COR LUBEC ST & PARAMOUNT BLVD 27FT N & 52FT E C/L INT	CY 1388
BASELINE (1975)	130.387	L&BN W CB PARAMOUNT BLVD @ NLY P L HSE NO 9603 33FT W/O C/L PARAMOUNT BLVD	CY 1389
BASELINE (1975)	131.832	L & T CONC CB @ BCR SE COR SUVA ST & PARAMOUNT BLVD 48FT S & 38FT E C/L INT MKD (8M)	CY 1390

QUAD-YEAR	ELEV	DESCRIPTION (INCLUDE QUAD AND YEAR IN DESCRIPTION)	BM NUMBER
BASELINE (1975)	134.278	L & T IN CONC CB @ BCR @ SW COR GALLATIN RD & PARAMOUNT BLVD 53FT S & 38FT W C/L INT	CY 1392
BASELINE (1975)	138.485	SQ HD SPK W CB OF SERVICE RD OF PARAMOUNT BLVD 12FT N C/L PRCD BROOKGREEN RD	CY 1394
BASELINE (1975)	139.448	L&BR E CB 1FT S/O BCR @ SE COR PARAMOUNT BLVD & VISTA DEL ROSA SERVICE ISLAND 40FT E & 50FT S C/L INT	CY 1395
BASELINE (1975)	142.010	CS MON IN WELL 8IN DN ON C/L TELEGRAPH RD 20FT WLY C/L PARAMOUNT BLVD MKD (BELL K4 1941)	CY 1397
BASELINE (1975)	143.720	RAM NAIL IN N CB TELEGRAPH RD 16FT E/O PP NO 14630Y 38FT N/O C/L TELEGRAPH RD & 110FT W/O C/L CRIDER AVE	CY 1400
BASELINE (1975)	145.601	RAM SET NAIL IN CONC ISLAND @ CTR OF DRWY TO KAYNAR CO BLDG 7875 42FT N OF C/L TELEGRAPH RD & 0.3MI E/O C/L INT SLAUSON AVE & TELEGRAPH RD 300FT E/O E END BRIDGE 53-212 OVER RIO HONDO	CY 1401
BASELINE (1975)	151.714	L&T IN N CB TELEGRAPH RD 4FT E OF CB RET @ NE COR SLAUSON AVE 40 FT N & 105FT E OF C/L INT	CY 1402
BASELINE (1975)	58.516	L&T CTR CB RET SW COR ASHWORTH ST & CLARK AVE 28FT S & 34FT W/O C/L INT	CY 1438
LAKWOOD (1980)	53.837	L&T 7FT W BCR @ NW COR SOUTH ST & CLARK AVE 52FT N & 60FT W C/L INT	CY 1442
LAKWOOD (1980)	52.885	CS BR CAP MON IN WELL @ C/L INT SOUTH ST & CLARK AVE (USE NW COR)	CY 1443
BELLFLWR (1980)	65.224	L&BR @ NW COR ARTESIA AVE & BELLFLOWER BLVD 5FT W CTR CB RET 43FT N & 43FT W C/L INT	CY 1499
BASELINE (1975)	139.974	L&T N CB SLAUSON AVE @ WLY END OF CURVE 42FT N C/L SLAUSON AVE & 300FT E BOXFORD AVE	CY 1561
BASELINE (1975)	148.448	L&T N CB SLAUSON AVE 2FT E CB RET @ NE COR GARFIELD AVE 38FT N & 65FT E C/L INT	CY 1566
BASELINE (1975)	152.547	L & BN IN S CB SLAUSON AVE 3FT N PP NO 666256E 0.2MI E GARFIELD AVE 32FT E/O DR TO BLDG NO 7000 ( EVANS PRODUCTS )	CY 1567
BASELINE (1975)	159.230	L&T RETAINING WALL N SIDE SLAUSON AVE FRONT OLIVE MEMORIAL PK 50FT N C/L SLAUSON AVE 5FT W OF E P/L OF PARK	CY 1568

QUAD-YEAR	ELEV	DESCRIPTION (INCLUDE QUAD AND YEAR IN DESCRIPTION)	BM NUMBER
BASELINE (1975)	158.152	RD MON IN WELL W/COVER ON C/L SLAUSON AVE 25FT W C/L GREENWOOD AVE (USE SE EDGE)	CY 1569
BASELINE (1975)	159.198	L&T S CB 3FT E BCR @ SE COR SLAUSON AVE & GREENWOOD AVE 40FT E & 38FT S/O C/L INT	CY 1570
BASELINE (1975)	157.942	CS MON IN WELL C/L INT TODD AVE & SLAUSON AVE	CY 1571
BASELINE (1975)	152.231	L&T IN S CB TELEGRAPH RD 5FT&IN E/O CB RET @ SE COR SLAUSON AV 40FT S & 48FT E OF C/L INT	CY 1573
BASELINE (1975)	157.020	RD MON IN WELL C/L INT GAGE AVE & SLAUSON AVE	CY 1574
SO GATE (1980)	138.615	L&BN IN CB 1FT W/O BCR @ SW COR FLORENCE AVE & BEAR AVE 40FT S & 31FT W/O C/L INT	CY 1734
BELLFLWR (1980)	65.747	L&T MCR NE COR PARAMOUNT BLVD & JACKSON ST 32FT N & 37FT E C/L INT	CY 1925
BASELINE (1975)	68.487	L&T E CB 15FT S CB RET @ SE COR FAULKNER AVE & COMPTON BLVD 15FT E & 54FT S/O C/L INT	CY 1933
BASELINE (1975)	66.971	CS MON C/L SAN JOSE AVE & APPROX N P/L OF 1ST ALLEY S COMPTON 130FT S C/L INT SAN JOSE AVE & COMPTON BLVD (USE N EDGE)	CY 1937
BASELINE (1975)	67.045	LAFC MON @ C/L INT COMPTON BLVD & SAN ANTONIO AVE MKD (L A CO FLOOD CONT)	CY 1940
BASELINE (1975)	87.978	RDBM TAG IN EAST ABUT. @ NE COR OF COMPTON BLVD BRIDGE OVER LA RIVER 1FT N/O CB FACE 24FT N C/L	CY 1941
BASELINE (1975)	77.606	RDBM TAG IN SOUTH CB COMPTON BLVD 65FT W OF BRIDGE NO 53-823 OVER THE (LONG BEACH FREEWAY) 250FT E GIBSON AVE 25FT S/O C/L COMPTON BLVD	CY 1944
BASELINE (1975)	66.285	L & T CTR CB RET @ SE COR COMPTON BLVD & ATLANTIC BLVD 40 FT S & 40FT E C/L INT	CY 1954
SO GATE (1980)	69.517	L&SPK E CB GIBSON AVE 16FT S CB RET @ SE COR GIBSON AVE & SAN VINCENTE ST 42FT S & 20FT E/O C/L INT	CY 1959
SO GATE (1980)	69.322	L&SPK E CB GIBSON AVE 14FT S CB RET @ SE COR GIBSON AVE & SAN MIGUEL ST 40FT S & 20FT E/O C/L INT	CY 1960
BASELINE (1975)	83.353	L & T 6FT W BCR @ SW COR PARAMOUNT BLVD & GARDENDALE ST 35FT S & 59FT W C/L INT	CY 2041

08/09/79

LOS ANGELES COUNTY ROAD DEPARTMENT  
SURVEY SECTION

PAGE 6

QUAD-YEAR	ELEV	DESCRIPTION (INCLUDE QUAD AND YEAR IN DESCRIPTION)	BM NUMBER
BASELINE (1975)	66.220	L&T CTR CB RET @ SE COR ALONDRA BLVD & DOWNEY AVE 48FT S & 47FT E C/L INT	CY 2343
BASELINE (1975)	72.890	L & T 30FT E C/L ALAMEDA ST & 33FT S OF C B ON C/L CRIS ST PRGD	CY 2351
BASELINE (1975)	70.622	L & T 30FT E C/L ALAMEDA ST ON C/L PRGD MEALY ST	CY 2352
BASELINE (1975)	68.440	L & BN 28FT N C/L COMPTON BLVD & 60FT W C/L ALAMEDA ST (E BBL) 13FT E/O E RAIL SPRR	CY 2356
BASELINE (1975)	68.635	L & BN 28FT S C/L COMPTON BLVD & 70FT W C/L ALAMEDA ST (E BBL) 5FT E/O E RAIL SPRR	CY 2357
BASELINE (1975)	65.250	L&T 25FT W C/L ALAMEDA ST E BARREL ON C/L PRGD LAUREL ST TO THE E	CY 2358
BASELINE (1975)	65.625	L&T W CB @ BCR @ NW COR ALAMEDA ST E BARREL & LAUREL ST TO THE W 25FT W & 32FT N C/L INT	CY 2359
BASELINE (1975)	63.900	STEEL SPK WITH (X) ON TOP CTR S BCR TO DRWY OF COMPTON STREET DEPT NG 458 S ALAMEDA ST 29FT E C/L E BARREL 180FT N MYRRH ST	CY 2360
BASELINE (1975)	64.945	CS MON IN WELL 10IN DN 50FT E C/L SPRR 27FT W C/L ALAMEDA ST E BARREL & 18FT S C/L PRGD MYRRH ST TO THE E MKD (BM 5-22A)	CY 2361
BASELINE (1975)	64.462	L&BN W CB ALAMEDA ST E BARREL 12FT E OF 5TH TELEGRAPH POLE N/O ALONDRA BLVD 500FT S/O MYRRH ST 25FT W/O C/L	CY 2362
BASELINE (1975)	64.694	L & T CTR CB RET SE COR ALONDRA BLVD & ALAMEDA ST W BARREL 45FT E & 41FT S C/L INT	CY 2364
BASELINE (1975)	62.496	L&T E CB ALAMEDA ST W BBL ON C/L PRGD RAYMOND AVE 27FT E/O C/L ALAMEDA ST	CY 2365
BASELINE (1975)	61.883	L&T E CB ALAMEDA ST W BBL 27FT E/O C/L ON C/L PRGD TICHENOR ST	CY 2367
BASELINE (1975)	61.620	L&T E CB ALAMEDA ST W BBL C/L PRGD CALDWELL ST 26FT E/O C/L ALAMEDA ST	CY 2368
BASELINE (1975)	61.329	L&T E CB ALAMEDA ST W BBL 27FT E/O C/L ON C/L PRGD JOHNSON ST	CY 2369
BASELINE (1975)	61.015	L&T E CB ALAMEDA ST W BBL 27FT E/O C/L ON C/L PRGD BENNET ST	CY 2370



08/09/79

LOS ANGELES COUNTY ROAD DEPARTMENT  
SURVEY SECTION

PAGE 7

QUAD-YEAR	ELEV	DESCRIPTION (INCLUDE QUAD AND YEAR IN DESCRIPTION)	BM NUMBER
BASELINE (1975)	60.222	L&BN E CB ALAMEDA ST OPP MILE POST NO 495 SPRR 0.15MI S/O GREENLEAF BLVD & 22FT E/O C/L ALAMEDA ST	CY 2373
BASELINE (1975)	59.726	STD DISC TOP OF CONC POST 3FT N OF MILE POST NO 495 SPRR & 38FT E C/L SPRR 2FT BELOW TOP OF RAIL & 0.15MI S/O GREENLEAF BLVD 113FT E/O C/L ALAMEDA ST MKD (Q 768 1945)	CY 2374
BASELINE (1975)	62.851	L&BN E CB ALAMEDA ST @ ANGLE POINT OF WINGWALL @ NE COR BRIDGE NO 774 OVER COMPTON CREEK 22FT E C/L & 174FT N C/L CREEK & 400FT S ARTESIA BLVD	CY 2377
BASELINE (1975)	58.101	FC BR CAP @ S END OF WINGWALL @ NE COR SPRR BRIDGE 90FT E C/L ALAMEDA ST & 450FT S C/L ARTESIA BLVD MKD (RBM 44-33)	CY 2378
BASELINE (1975)	62.892	FC BR CAP 5FT S ANGLE POINT WINGWALL SW COR BRIDGE NO 774 ON ALAMEDA ST OVER COMPTON CREEK 28FT W C/L & 600FT S ARTESIA BLVD MKD (BM 44-33)	CY 2379
BASELINE (1975)	51.401	LAFC BR CAP E CB ALAMEDA ST 22FT E/O C/L OPP OLD ENT DOMINGUEZ SEMINARY MKD (RBM 44-32)	CY 2380
BASELINE (1975)	52.775	FC BR CAP SE COR 8X8FT CONC VALVE BOX 58FT E C/L SPRR & 125FT E/O C/L ALAMEDA ST OPP OLD ENT TO DOMINGUEZ SEMINARY MKD (RBM 44-32)	CY 2381
BASELINE (1975)	50.492	L&BN W CB ALAMEDA ST 22FT W C/L OPP NE COR 8FT CHAIN LINK FENCE AROUND SO CAL EDISON SUB-STATION PROPERTY 650FT N DOMINGUEZ JCT	CY 2382
BASELINE (1975)	46.636	L&BN W CB ALAMEDA ST W BBL 22FT W/O C/L & 530FT S/O C/L LONG BEACH LINE PERR 37FT N/O TP NO 16767R	CY 2384
BASELINE (1975)	45.832	L&BN E CB ALAMEDA ST W BBL 22FT E/O C/L & 1285FT S/O C/L LONG BEACH LINE PERR 0.25MI N/O LAUREL PARK RD	CY 2385
BASELINE (1975)	42.883	STD USGS DISC IN CONC POST 3IN UP 30FT E C/L SPRR 55FT W C/L ALAMEDA ST E BARREL 0.5MI NLY DEL AMO BLVD 4FT N TP#LU MKD (P 768 1945)	CY 2388
BASELINE (1975)	41.323	L&BN E CB ALAMEDA ST W BARREL 22FT E/O C/L 0.1MI N/O VISTA INDUSTRIA OPP BLDG NO 19722	CY 2389
BASELINE (1975)	40.848	CUT SPK E CB ALAMEDA ST W BARREL 22FT E C/L & 0.25MI N/O DEL AMO BLVD 105FT S/O C/L VISTA INDUSTRIA	CY 2390

QUAD-YEAR	ELEV	DESCRIPTION (INCLUDE QUAD AND YEAR IN DESCRIPTION)	BM NUMBER
BASELINE (1975)	37.788	CS MON IN WELL 2FT N C/L DEL AMO BLVD & 50FT W C/L ALAMEDA W BARREL MKD (COMPTON J7 1942)	CY 2391
BASELINE (1975)	37.657	L&T E CB 2FT S OF END OF CB @ SE COR ALAMEDA ST W BARREL & DEL AMO BLVD 4FT N TP NO 427134H 65FT S & 22FT E C/L INT	CY 2392
BASELINE (1975)	32.617	L&SPK E CB ALAMEDA ST W BARREL 22FT E C/L 275FT N/O C/L EL PRESIDIO ST 1400FT S DEL AMO BLVD	CY 2393
BASELINE (1975)	32.038	L&BN E CB ALAMEDA ST W BARREL 22FT E C/L 23FT PP NO 577803R 900FT N OF DOMINGUEZ ST	CY 2394
BASELINE (1975)	31.612	L & T NR MCR @ SE COR ALAMEDA ST & DOMINGUEZ ST 22FT S & 45FT E/O C/L INT E BAR	CY 2414
BASELINE (1975)	31.293	L & T IN S CB 20FT S C/L DOMINGUEZ ST 1FT W/O DRWY TO HSE NO 2638 DOMINGUEZ ST 0.10MI W/O PROSPECT AVE	CY 2415
BASELINE (1975)	31.945	L&T S CB DOMINGUEZ ST 25FT W DRWY HSE NO 2738 DOMINGUEZ ST (FRONT FIRE PLUG) 0.15MI W/O SANTA FE AVE	CY 2416
BASELINE (1975)	32.780	L & S IN W CB 3FT S BCR @ SW COR DOMINGUEZ ST & SANTA FE AVE 38FT S & 40FT W C/L INT	CY 2417
BASELINE (1975)	67.421	L&T NR W END OF CONC WK AROUND HSE #8700 ALONDRA BLVD 57FT S & 25FT E C/L INT ALONDRA BLVD & HAYTER ST	CY 2589
BASELINE (1975)	67.392	LACS MON 30FT N & 70FT E C/L INT ALONDRA BLVD & CLARK AVE MKD( BM 6-8 1951)	CY 2596
BASELINE (1975)	73.279	L&T N CB 4FT W CB RET @ NW COR ALONDRA BLVD & BLAINE AVE	CY 2597
BASELINE (1975)	73.411	L&T IN N CB 3FT E CB RET @ NE COR ALONDRA BLVD & BLAINE AVE	CY 2598
BASELINE (1975)	74.110	L&BN S CB 1FT W CB RET @ SW COR ALONDRA BLVD & BELLFLOWER BLVD 38FT S & 46FT W C/L INT	CY 2600
BASELINE (1975)	72.999	L&T N CB 1FT E CB RET @ NE COR ALONDRA BLVD SERVICE RD & DUMONT AVE	CY 2616
BASELINE (1975)	73.557	L&T N CB 1FT E OF CB RET @ NE COR ALONDRA BLVD SERVICE RD & LEIBACHER AVE	CY 2617
BASELINE (1975)	44.144	L & BN 1FT E BCR @ NE COR CARSON ST & 1ST ALLEY W WOODRUFF AVE 40FT N & 400FT W C/L INT	CY 2678

QUAD-YEAR	ELEV	DESCRIPTION (INCLUDE QUAD AND YEAR IN DESCRIPTION)	BM NUMBER
BASELINE (1975)	44.642	L & T 2FT W BCR @ NW COR WOODRUFF AVE & CARSON ST 42FT N & 79FT W C/L INT MKD (8M)	CY 2679
BASELINE (1975)	39.856	RDBM TAG S CB 1FT W BCR @ SW COR BELLFLOWER BLVD & CARSON ST 38FT S & 70FT W C/L INT	CY 2704
BASELINE (1975)	39.631	L&T @ CTR CB RET @ NE COR BELLFLOWER BLVD & CARSON ST 50FT N & 50FT E/O C/L INT	CY 2706
BASELINE (1975)	21.472	CS MON (BR SPK IN CONC) IN WELL @ INT PALO VERDE AVE & SPRING ST 18IN DN	CY 2931
BASELINE (1975)	20.996	LACS MGN IN WELL 12IN DN 8FT S & 15FT E C/L INT (NO SER RD) SPRING ST & LOMINA AVE MKD (BM 8-35)	CY 2940
BASELINE (1975)	22.543	L&N S CB SPRING ST (N SERVICE RD) C/L LOMINA AVE PROD 13FT S/O C/L N SERVICE RD SPRING ST	CY 2941
BASELINE (1975)	21.804	L & N IN CTR ISL S END PARKWAY SAN ANSELINE AVE 28FT N C/L SPRING ST SERVICE RD	CY 2942
BASELINE (1975)	22.661	L & NAIL IN SO CB SERVICE RD SPRING ST ON C/L PROD CHATWIN AVE 54FT N/O C/L SPRING ST	CY 2943
BASELINE (1975)	22.259	L & BN IN N CB 1FT E BCR 54FT N & 81FT E C/L INT SPRING ST & BELLFLOWER BLVD	CY 2944
BASELINE (1975)	21.348	LACS MON IN WELL 14IN DN W/ CITY OF L B COVER @ C/L INT SPRING ST & BELLFLOWER BLVD (N EDGE)	CY 2946
BASELINE (1975)	104.350	L & T 18FT S C/L SPRINGER ST & 70FT W C/L PARAMOUNT BLVD 8FT W BCR @ SW COR IN CB	CY 3168
BASELINE (1975)	110.277	L & B 1FT W BCR @ SW COR DE PALMA ST & PARAMOUNT BLVD 18FT S & 74FT W C/L INT	CY 3173
BASELINE (1975)	111.336	L & BRAD 1FT W BCR @ NW COR CLETA ST & PARAMOUNT BLVD 18FT N & 75FT W C/L INT	CY 3174
BASELINE (1975)	112.152	L&T 2FT W/O BCR @ SW COR BROOKMILL RD & PARAMOUNT BLVD 18FT S & 77FT W/O C/L INT	CY 3175
BASELINE (1975)	115.822	LACS MON IN WELL @ C/L INT 2ND ST & PARAMOUNT BLVD ( USE S EDGE )	CY 3182
BASELINE (1975)	123.950	L & T 2FT S BCR @ SW COR PARAMOUNT BLVD & FARM ST 55FT S & 38FT W C/L INT	CY 3183
BELLFLWR (1980)	60.805	L&BR CTR CB RET @ SW COR ARTESIA ST & PARAMOUNT BLVD 54FT S & 45FT W C/L INT	CY 3631

QUAD-YEAR	ELEV	DESCRIPTION (INCLUDE QUAD AND YEAR IN DESCRIPTION)	BM NUMBER
BELLFLWR (1980)	52.290	L&BN E SIDE CONC BASE S PEDESTRIAN GATE POST OF WIRE FENCE 45FT W/O C/L PARAMOUNT BLVD 6FT NE COR EDISON CO TRANSFORMER ON THE RICHFIELD OIL CO PROPERTY 5900 BLOCK OF PARAMOUNT BLVD 0.4MI S/O C/L 63RD ST	CY 3634
BASELINE (1975)	53.957	L & BN 1FT W BCR @ NW COR LAKEWOOD BL & SOUTH ST 40FT N & 80FT W C/L INT	CY 3639
BASELINE (1975)	56.592	L&BN S CB ALLINGTON ST 75FT W/O C/L 28FT S/O C/L WOODRUFF AVE 1FT W/O BCR	CY 3676
BASELINE (1975)	56.824	L&BR W CB 3FT N BCR @ NW COR ALLINGTON ST & CANEHILL AVE 75FT N & 18FT W C/L INT	CY 3679
BASELINE (1975)	57.379	RDBM TAG S CB 1FT E BCR @ SE COR ALLINGTON ST & CANEHILL AVE 30FT S & 60FT E C/L INT	CY 3680
BASELINE (1975)	55.856	CS MON C/L INT PALO VERDE AVE & ALLINGTON ST	CY 3681
BASELINE (1975)	49.686	CSBM MON IN WELL 88FT S/O C/L SOUTH ST 9FT E/O C/L PALO VERDE AVE MKD (BM 9-9 1951)	CY 3686
LAKWOOD (1980)	51.420	L&BN W CB 15FT N BCR @ NW COR SOUTH ST & SNOWDEN AVE 120FT N & 18FT W C/L INT	CY 3690
LAKWOOD (1980)	54.145	L&BN 1FT W OF BCR @ SW COR OCANA AVE & SERVICE RD SOUTH ST 80FT S & 48FT W C/L INT	CY 3696
LAKWOOD (1980)	55.263	L&BN 1FT W BCR @ SW COR COLDBROOK AVE & SERVICE RD SOUTH ST 80FT S & 40FT W C/L INT	CY 3697
LAKWOOD (1980)	55.122	L & BN 42FT S C/L SOUTH ST & 15FT E C/L PROD ADENMOOR AVE	CY 3698
BASELINE (1975)	58.061	L&T 1FT S CB RET @ SW COR ASHWORTH ST & WOODRUFF AVE 45FT S & 40FT W/O C/L INT	CY 3702
BASELINE (1975)	79.756	BR CAP @ S END W CONC BANNISTER @ MAIN ENT TO THE (FRANCIS WILLARD SCHOOL) 114FT E C/L ALAMEDA ST E BBL & 98FT S C/L EL SEGUNDO BLVD MKD (W 615 1941)	CY 3741
BASELINE (1975)	75.451	CS MON IN WELL 27FT E C/L ALAMEDA ST W BBL & 3FT S C/L EL SEGUNDO BLVD	CY 3742
BASELINE (1975)	175.372	CS MON IN WELL 13FT N/O MOST NLY PE TRACK ON RANDOLPH ST & 12FT W FROM MOST WLY SP RAIL ON ALAMEDA ST 22FT E/O C/L W BBL ALAMEDA ST 11FT S C/L N BBL RANDOLPH ST	CY 3805

QUAD-YEAR	ELEV	DESCRIPTION (INCLUDE QUAD AND YEAR IN DESCRIPTION)	BM NUMBER
BASELINE (1975)	178.691	DISC IN S WALL 2FT E SW COR BLDG 3FT UP @ NE COR RANDOLPH ST & E BBL ALAMEDA ST 8FT N/O N CB & 8FT E/O E CB	CY 3806
BASELINE (1975)	154.052	L&BN 1FT W BCR @ NW COR W BBL ALAMEDA ST & FLOR- ENCE AVE 30FT N & 60FT W C/L INT	CY 3823
BASELINE (1975)	157.169	CS MON SET VERTICAL SW COR BLDG 2FT UP 3FT N COR 53FT N/O C/L FLORENCE AVE 86FT E/O E CB ALAMEDA ST (E BARREL)	CY 3825
BASELINE (1975)	179.435	L & BN 2FT E BCR @ SW COR SLAUSON AVE & ALAMEDA ST 34FT S & 43FT W/O C/L INT	CY 3835
BASELINE (1975)	178.983	CS MON C/L SLAUSON AVE 14FT W OF W RAIL SPRR 20FT E C/L ALAMEDA ST MKD ( WATTS H-2A 1939)	CY 3836
BASELINE (1975)	65.550	CS MON IN WELL 24FT W C/L ALAMEDA ST E BARREL 48FT N C/L COMPTON BLVD MKD (BM 5-21 RE 329 1951)	CY 4130
SO GATE (1980)	155.413	L & BN 2FT W BCR @ SW COR SANTA FE AVE & FLORENCE AVE 35FT S & 48FT W/O C/L INT	CY 4131
SO GATE (1980)	155.276	L&T IN CB 35FT S/O C/L FLORENCE AVE & ON C/L PROD RUGBY AVE	CY 4133
SO GATE (1980)	151.621	L&BN IN CB 36FT S/O C/L FLORENCE AVE 10FT W/O C/L PROD MILES AVE	CY 4136
SO GATE (1980)	150.901	L & BN 2FT N BCR @ SW COR MOUNTAIN VIEW AVE & FLORENCE AVE 58FT S & 15FT W C/L INT	CY 4137
BASELINE (1975)	49.892	L&T NR SE COR CONC SLAB @ ENT BLDG NO 5584 PARAMOUNT BLVD 60FT E C/L PARAMOUNT BLVD & 105FT S C/L 56TH ST	CY 4565
BASELINE (1975)	50.915	RDBM TAG 1.5FT E BCR @ NE COR PARAMOUNT BLVD & SOUTH ST 40FT N & 75FT E C/L INT	CY 4567
BASELINE (1975)	67.380	L & SPK 3FT E BCR @ SE COR COMPTON BLVD & BRADFIELD AVE 40FT S & 42FT E C/L INT	CY 4571
BASELINE (1975)	65.896	CITY OF COMPTON MON IN WELL 18IN DP C/L COMPTON BLVD & C/L PROD BRADFIELD AVE N	CY 4572
BASELINE (1975)	66.122	CITY OF COMPTON MON IN WELL 12IN DP @ C/L INT COMPTON BLVD & LONG BEACH BLVD 5FT N OF MON TO THE S	CY 4574
BASELINE (1975)	66.443	RDBM TAG 18FT N BCR @ NE COR COMPTON BLVD & BURRIS AVE 55FT N & 14FT E C/L INT	CY 4575

QUAD-YEAR	ELEV	DESCRIPTION (INCLUDE QUAD AND YEAR IN DESCRIPTION)	BM NUMBER
BASELINE (1975)	66.042	L & T 15FT S BCR @ SW COR COMPTON BLVD & BURRIS AVE 52FT S & 14FT W C/L INT	CY 4576
BASELINE (1975)	64.337	L & SPK CTR CB RET @ SE COR SANTA FE AVE & COMPTON BLVD 31FT S & 44FT E C/L INT	CY 4577
BASELINE (1975)	64.596	L & SPK 1FT N BCR @ NE COR SANTA FE AVE & COMPTON BLVD 42FT N & 40FT E C/L INT	CY 4578
BASELINE (1975)	164.863	L&T S CB SLAUSON AVE 192FT W & 21FT S C/L INT DOWNEY RD & SLAUSON AVE FRONT OF POWER POLE	CY 4665
BASELINE (1975)	162.168	CS MON IN WELL 8IN DN 2FT S & 4FT W/O C/L INT SLAUSON AVE & EVERETT AVE MKD ( LA CO SUR CONTROL SYS TRAVERSE STA WATTS L-2B RE4233 )	CY 4666
BASELINE (1975)	57.613	CS MON IN WELL 8IN DN ON SW COR CLARK AVE & ASHWORTH ST 38FT S & 30FT W C/L INT MKD (BM 32 3)	CY 4961
BASELINE (1975)	46.660	RDBM TAG W CB 6FT N BCR OF ISLAND @ NW COR PARAMOUNT BLVD & HARDWICK ST 45FT N & 40FT W C/L INT	CY 4962
BASELINE (1975)	46.818	RDBM TAG W CB 2FT S BCR OF ISLAND @ SW COR PARAMOUNT BLVD & HARDWICK ST 37FT S & 43FT W C/L INT	CY 4963
BASELINE (1975)	43.414	CS MON IN WELL 10IN DN ON SW COR DEL AMO BLVD & & PALC VERDE AVE 23FT W & 85FT S C/L INT MKD (BM 9-10)	CY 4993
BASELINE (1975)	44.501	L&T E CB 17FT S BCR @ SE COR DEL AMO BLVD & PALC VERDE AVE 90FT S & 30FT E C/L INT MKD (BM)	CY 4994
BASELINE (1975)	55.055	USC&GS BR CAP E END CONC BRIDGE 1000FT W LAKEWOOD BLVD NR CTR GOLF COURSE 50FT N C/L CARSON ST MKD (C780 1946)	CY 5000
BASELINE (1975)	55.089	SQ HD BT E END HDWL CONC BRIDGE 1000FT W LAKEWOOD BLVD NR CTR GOLF COURSE 50FT S C/L CARSON ST MKD (U)	CY 5001
BELLFLWR (1980)	67.125	L&BRAD W CB 1FT N BCR @ NW COR CARSON ST & DEEBOYER AVE 90FT N & 18FT W C/L INT MKD (BM)	CY 5006
BELLFLWR (1980)	62.156	RDBM TAG N CB 1FT E BCR @ NE COR CHERRY AVE & BIXBY AVE 30FT N & 88FT E SPLIT OF CBS	CY 5008
BELLFLWR (1980)	62.113	RDBM TAG S CB 3FT E BCR @ SE COR CHERRY AVE & BIXBY AVE 30FT S & 91FT E SPLIT OF CBS	CY 5009

QUAD-YEAR	ELEV	DESCRIPTION (INCLUDE QUAD AND YEAR IN DESCRIPTION)	BM NUMBER
BELLFLWR (1980)	56.521	LONG BEACH MON IN WELL 8IN DN @ CR NR C/L INT 37TH ST & CHERRY AVE ( USE S EDGE)	CY 5010
BELLFLWR (1980)	56.970	RDBM TAG E CB 74FT E C/L CHERRY AVE & 33FT N C/L PRCD 37TH ST	CY 5011
BASELINE (1975)	53.260	CITY OF LONG BEACH MGN IN WELL 8IN DN ON NW COR CHERRY AVE & WARDLOW RD 5FT N OF N CB & 45FT W OF W CB 34FT N/O C/L WARDLOW RD & 85FT W/O CHERRY AVE MKD (BM 93)	CY 5014
BASELINE (1975)	47.671	L&T S CB 3FT W BCR @ SW COR PALO VERDE AVE & CANDLEWOOD ST 68FT W & 38FT S C/L INT MKD (BM)	CY 5017
BASELINE (1975)	46.517	L&BR E CB 1FT N BCR @ NE COR PALO VERDE AVE & EBERLE ST 50FT N & 30FT E C/L INT MKD (BM)	CY 5019
BASELINE (1975)	38.675	CS MGN IN WELL 10IN DN @ OR NR C/L INT PALO VERDE AVE & ARBOR RD (USE S EDGE)	CY 5020
BASELINE (1975)	41.277	L&BN N CB 73FT W BCR @ NW COR PALO VERDE AVE & ARBOR RD 138FT W & 18FT N C/L INT (ALONG FC R/W) CB MKD (LC 28)	CY 5021
BASELINE (1975)	36.148	CS MON IN WELL 12IN DN @ OR NR C/L INT PALO VERDE AVE & CENTRALIA ST (USE W EDGE)	CY 5022
BASELINE (1975)	38.068	RD HD SPK S CB (W SIDE BRIDGE NO 8950) 140FT W BCR @ SW COR PALO VERDE AVE & CENTRALIA ST 205FT W & 18FT S C/L INT CB MKD (KN 240)	CY 5023
BASELINE (1975)	35.116	CS MON IN WELL 12IN DN @ OR NR C/L INT PALO VERDE AVE & HARVEY WAY	CY 5024
BASELINE (1975)	36.210	L&BN E CB 1FT S BCR @ SE COR PALO VERDE AVE & HARVEY WAY 30FT E & 57FT S C/L INT	CY 5025
BASELINE (1975)	36.508	RDBM TAG W CB 6FT N BCR @ NW COR PALO VERDE AVE & CARSON ST 82FT N & 30FT W C/L INT	CY 5026
BASELINE (1975)	36.457	RDBM TAG E CB 6FT N BCR @ NE COR PALO VERDE AVE & CARSON ST 82FT N & 30FT E C/L INT	CY 5027
BASELINE (1975)	44.873	CS MON FLUSH W/WLK 2FT NW CTR CB RET @ NW COR CARSON ST & WOODRUFF AVE 57FT N & 48FT W C/L INT MKD (K9 RM NO 3)	CY 5029
BASELINE (1975)	42.118	RDBM TAG SO CB N SER RD 54FT N & 615FT W/O INT CARSON ST & CARFAX AVE (FRONT OF HSE NO 6133) ENT TO WATER PUMP HSE	CY 5030

QUAD-YEAR	ELEV	DESCRIPTION (INCLUDE QUAD AND YEAR IN DESCRIPTION)	BM NUMBER
BASELINE (1975)	41.657	RDBM TAG NO CB N SER RD 82FT N & 615FT W/O INT CARSON ST & CARFAX AVE (FRONT OF HSE NO 6133) ENT TO WATER PUMP HSE	CY 5031
BASELINE (1975)	56.112	L&T E CB 2FT S BCR @ SE COR WOODRUFF AVE & ALLINGTON ST 76FT S & 40FT E C/L INT MKD (BM)	CY 5045
BASELINE (1975)	62.540	RDBM TAG 2FT S BCR @ SW COR PARAMOUNT BLVD & WARWOOD RD 47FT S & 76FT W C/L INT	CY 5052
BASELINE (1975)	62.517	RDBM TAG W CB 2FT N BCR @ NW COR PARAMOUNT BLVD & WARWOOD RD 48FT N & 76FT W C/L INT	CY 5053
BASELINE (1975)	60.561	RDBM TAG W CB 2FT S BCR @ SW COR PARAMOUNT BLVD & GREENTOP ST 46FT S & 76FT W C/L INT	CY 5054
BASELINE (1975)	60.277	RDBM TAG W CB 2FT N BCR @ NW COR PARAMOUNT BLVD & GREENTOP ST 46FT N & 76FT W C/L INT	CY 5055
BASELINE (1975)	54.404	RDBM TAG W CB 2FT N BCR @ NW COR PARAMOUNT BLVD & CENTRALIA ST 47FT N & 76FT W C/L INT	CY 5057
BASELINE (1975)	119.713	CS MON CONC FOUNDATION SW LEG TRANSMISSION LINE TOWER NO 26503 33FT E C/L E BBL ALAMEDA ST & 118 FT N C/L SOUTHERN AVE MKD ( LC 769 1945)	CY 5771
BASELINE (1975)	111.407	CS MON 12IN DN 60FT N C/L TWEEDY BLVD & 27FT E C/L W BBL ALAMEDA ST MKD WATTS I 7 A 1938	CY 5772
BASELINE (1975)	113.565	RD MON CONC BASE FORMER RR SIGNL 68FT E C/L W BB ALAMEDA ST & 30FT N C/L TWEEDY BLVD MKD (BM 30)	CY 5773
BASELINE (1975)	102.901	CS MON IN CONC POST 2IN UP 1FT E OF E CB ALAMEDA ST W BBL & 199 N C/L CENTURY BLVD MKD (RE 2177-6) USE SE EDGE	CY 5775
BASELINE (1975)	101.968	CS MON IN CONC POST FL 3FT W OF W CB ALAMEDA ST (E BARREL) 199FT N C/L CENTURY BLVD MKD (A769) USE S EDGE	CY 5776
BASELINE (1975)	91.310	LACE HEX MON IN WELL 32FT E C/L ALAMEDA ST W BBL & 34FT S C/L IMPERIAL HWY	CY 5779
BASELINE (1975)	91.188	L&BN 10FT S BCR @ SE COR 25FT E C/L ALAMEDA ST E BBL & 70FT S C/L IMPERIAL HWY MKD BM	CY 5780
BASELINE (1975)	63.878	R D MON NR N END CONC HDWL CULV 27FT E C/L MAIN TRACK SPRR 45FT W C/L ALAMEDA ST E BARREL 17FT S C/L PROD RAYMOND ST MKD (19)	CY 5783



QUAD-YEAR	ELEV	DESCRIPTION (INCLUDE QUAD AND YEAR IN DESCRIPTION)	BM NUMBER
BASELINE (1975)	63.710	USC&GS MON NR S END CULV HDWL 10FT W C/L SPRR & 70FT E C/L ALAMEDA ST W BARREL 90FT N C/L PRCD CALDWELL ST MKD (T 615 1941)	CY 5784
BASELINE (1975)	54.848	MWD MON 3FT E OF E CB ALAMEDA ST 26FT E C/L & 0.5MI S/O ARTESIA BLVD IN S END CONC CULV OPP GATE NO 18011 MKD (56Z 1933)	CY 5785
BASELINE (1975)	52.831	RDBM MON FLUSH 4FT E OF E CB ALAMEDA ST 26FT E C/L & 19FT S PP NC 241565E 61FT S OF S END CONC CULV 0.5MI S ARTESIA BLVD MKD (BM 15)	CY 5786
BASELINE (1975)	49.231	USC&GS MON NEAR N END SFRR CULV HDWL NO 496.25 18FT W/O C/L SFRR TRACKS 67FT E/O C/L ALAMEDA ST & 450FT S/O C/L INT ALAMEDA ST & PERR MKD (F 52 1926)	CY 5787
BELLFLWR (1980)	64.679	L&T E CB 2FT S BCR @ SE COR ATLANTIC AVE & MYRRH ST 27FT S & 36FT E C/L INT	CY 6120
BELLFLWR (1980)	64.670	L&T W CB 1FT S BCR @ SW COR ATLANTIC AVE & MYRRH ST 26FT S & 36FT W C/L INT	CY 6121
BASELINE (1975)	31.473	CS MON 10IN DN 14FT S & 72FT W C/L INT DOMINGUEZ ST & SANTA FE AVE MKD (BM 8-57 RE 63)	CY 6146
BASELINE (1975)	53.772	BT SPK IN CONC ABUT OF UPRR & PERR CROSSING OVER LONG BEACH FREEWAY NR DOMINGUEZ ST 18FT W OF W RAIL PERR & 8FT N OF N RAIL UPRR	CY 6147
BASELINE (1975)	57.015	CS BR DISK CTR S HDWL W CONC ABUT UPRR BRIDGE OVER LA RIVER 10FT E/O W END HDWL MKD (BM 8-558 1960)	CY 6148
BASELINE (1975)	57.145	CS BR DISK CTR N HDWL E CONC ABUT 6FT E UPRR BRIDGE OVER LA RIV @ MILE POST 17.13 MKD (BM 8-548 1960)	CY 6150
BASELINE (1975)	43.933	USC & GS DISK 3FT ABOVE GROUND IN E FACE OF W CONC ABUT UPRR BRIDGE OVER LONG BEACH BLVD 1FT S/O N END ABUT & 50FT W/O LONG BEACH BLVD & 60FT S/O C/L 48TH ST MKD (Z-799 1946)	CY 6151
BASELINE (1975)	102.466	4IN BR TABLET IN WELL 18FT N OF S CB LINE PRCD SAN ANTONIO DR & 33FT E OF W CB LINE PRCD LONG BEACH BLVD MKD (LA COUNTY SURVEY CONTROL SYSTEM TRAVERSE STATION CLEARWATER B-8A RE 2177) @ OR NEAR C/L INT	CY 6152

QUAD-YEAR	ELEV	DESCRIPTION (INCLUDE QUAD AND YEAR IN DESCRIPTION)	BM NUMBER
BASELINE (1975)	87.981	4IN BR TABLET IN WELL 40FT E OF W CB PROD LONG BEACH BLVD & 48FT S/C N CB PROD WARDLOW RD MKD (LA COUNTY SURVEY CONTROL SYSTEM TRAVERSE STATION CLEARWATER B-10 RE 2177) @ OR NEAR C/L INT TO THE E	CY 6153
BASELINE (1975)	24.163	L B CITY MON IN WELL IN LEFT TURN LANE OF NO BBL SPRING ST @ NE COR SPRING ST & LAKEWOOD BLVD 8FT N/O N CB MEDIAN ISL 3FT W/O END ISL 72FT E/O C/L LAKEWOOD BLVD ON C/L SPRING ST MKD (CITY ENG MGN-USE N EDGE)	CY 6155
BASELINE (1975)	21.627	L&BRAD IN CHIS SQ W CB 6FT S BCR @ SW COR SPRING ST & SNOWDEN AVE 100FT S & 18FT W C/L INT	CY 6158
BASELINE (1975)	22.997	RDBM TAG S CB 1FT E BCR @ SE COR SPRING ST & SNOWDEN AVE 45FT S & 48FT E C/L INT	CY 6159
BASELINE (1975)	139.551	MON IN WELL 12IN DN 57FT N/O & 41FT E/O C/L INT OF SLAUSON AVE & ALAMEDA AVE MKD (BM 4-21 1951)	CY 6170
BASELINE (1975)	150.785	CS MON IN WELL 10IN DN 41FT NLY S CB SLAUSON AVE & 7FT WLY E CB FLORA AVE MKD (BELL 2-A 1938)	CY 6723
BASELINE (1975)	148.202	L&NAIL 1FT N BCR @ NW COR SLAUSON AVE & GARFIELD AVE 66FT N & 38FT W/C C/O INT	CY 6727
BASELINE (1975)	165.209	CS MON 15IN DN ON C/L BOYLE AVE (STATE ST) 17FT S C/L SLAUSON AVE MKD (WATTS K-2A RE 4233)	CY 6738
BASELINE (1975)	173.247	CS MON 8IN DN ON C/L MILES AVE (SOTO ST) 14FT S C/L SLAUSON AVE MKD (WATTS J-2E 1938)	CY 6740
BASELINE (1975)	149.266	L&BN W CB @ NW COR ATLANTIC BLVD & SLAUSON AVE 35FT W & 97FT N C/L INT	CY 6749
BASELINE (1975)	69.913	BT SPK 9FT S BCR @ SE COR 73FT S & 24FT E C/L IN ROSECRANS AVE & ALAMEDA ST (E BBL)	CY 6976
BASELINE (1975)	73.440	CS MON FL IN C B ON NE COR ALAMEDA ST (E BARREL) & EUCLID AVE 45FT N & 27FT E C/L INT MKD (BM 5-19A 1964)	CY 6977
BASELINE (1975)	81.994	L&BN E CB 1FT S BCR @ SE COR ALAMEDA ST E BBL & DIXON AV 40FT S & 20FT E APPROX C/L INT MKD (BM)	CY 6978
BASELINE (1975)	82.499	RDBM TAG IN CONC APRON ON SE COR ALAMEDA ST E BB & DIXON AVE 15FT S & 50FT E APPROX C/L INT MKD (BM)	CY 6979

QUAD-YEAR	ELEV	DESCRIPTION (INCLUDE QUAD AND YEAR IN DESCRIPTION)	BM NUMBER
BASELINE (1975)	95.672	L&BN W CB 1FT N BCR @ NW COR ALAMEDA ST W BBL & SANTA ANA BLVD 30FT W & 105FT N APPRQX C/L INT	CY 6980
BASELINE (1975)	72.729	CS MON IN WELL 10IN DN @ NW COR ALONDRA BLVD & BELLFLOWER BLVD 33FT N & 73FT W/O C/L INT MKD (BM 6-7 1951)	CY 7028
BASELINE (1975)	69.057	CS MON FL @ SE COR ALONDRA BLVD & LAKEWOOD BLVD 42FT S & 187FT E C/L INT MKD (BM 6-9A 1958)	CY 7029
BASELINE (1975)	77.869	CS MON FL IN C B @ NW COR PARAMOUNT BLVD & CENTURY BLVD 90FT N & 39FT W C/L INT MKD (BM 7-2A 1961)	CY 7030
BASELINE (1975)	80.548	CS MON FL IN C B ON NW COR PARAMOUNT BLVD & HARDING AVE 40FT N & 41FT W C/L INT MKD (BM 7-3A 1961)	CY 7031
BASELINE (1975)	79.846	CS MON 10IN DN ON NW COR HARDING AVE & PARAMOUNT BLVD 95FT N & 44FT W C/L INT MKD (BELL E 11A 1960)	CY 7032
BASELINE (1975)	105.609	CS REF MON IN WELL 40FT W/O C/L PARAMOUNT BLVD & 42FT S C/L PROD ALAMEDA ST MKD ( BELL G 9 RM-1)	CY 7033
BASELINE (1975)	105.640	CS REF MON IN WELL 40FT W/O C/L PARAMOUNT BLVD & 38FT N/O C/L PROD ALAMEDA ST MKD ( BELL G 9 RM2)	CY 7034
BASELINE (1975)	133.388	CS MON 10IN DN SE COR GALLATIN RD & PARAMOUNT BLVD 59FT E & 25FT S C/L INT MKD (BM 7-12 1951)	CY 7036
SD GATE (1980)	67.135	CS MON IN WELL 12IN DN @ C/L INT GIBSON AVE & SAN LUIS ST MKD ( CO SUR MON RE 329) USE E EDGE	CY 7038
BASELINE (1975)	65.889	CS MON IN WELL 12IN DN @ C/L INT SAN LUIS ST & LIME AVE MKD (CO SUR MON RE 329)	CY 7039
BASELINE (1975)	26.721	FC MON IN WK FL 1FT BACK OF CB FACE @ NE COR 45FT E & 48FT N C/L INT WARDLOW RD & PALO VERDE AVE MKD (074-50900)	CY 7055
BASELINE (1975)	30.440	L&BN 1FT S BCR @ SE COR CONANT ST & PALO VERDE AVE 30FT E & 55FT S C/L INT	CY 7056
BASELINE (1975)	30.523	L&T 1FT E BCR @ NE COR CONANT ST & PALO VERDE AVE 65FT E & 20FT N C/L INT	CY 7057
BASELINE (1975)	22.983	CS MON IN HAND HOLE @ C/L INT SPRING ST & CLARK AVE (USE W EDGE)	CY 7059

QUAD-YEAR	ELEV	DESCRIPTION (INCLUDE QUAD AND YEAR IN DESCRIPTION)	BM NUMBER
BASELINE (1975)	23.133	L B CITY MON IN WELL IN LEFT TURN LANE @ NW COR LAKEWOOD BLVD & SPRING ST 8FT W/O W CB MEDIAN ISL 56FT N/O S END ISL 113FT N/O SPRING ST ON C/L LAKEWOOD BLVD (USE W EDGE)	CY 7060
BASELINE (1975)	35.045	L B CITY MON FL IN CB @ NW COR SPRING ST & REDONDO AVE 40FT N & 45FT W/O C/L INT 3FT W/O BCR MKD (RE 3111-BM-8-40B C L B 1963)	CY 7061
BASELINE (1975)	35.044	L&BR IN CHIS SQ TOP OF CB @ SW COR SPRING ST & REDONDO AVE 41FT S & 55FT W C/L INT	CY 7062
BASELINE (1975)	46.694	LB CITY MON 14IN DN @ NELY COR SPRING ST & TEMPLE AVE 40FT NLY & 35FT ELY C/L INT MKD (541)	CY 7063
BASELINE (1975)	47.794	L&N N CB SPRING ST 37FT W OF BCR @ NW COR SPRING ST & TEMPLE AVE 80FT W & 40FT N C/L INT	CY 7064
BASELINE (1975)	78.821	L&BR IN CHIS SQ 20FT S BCR @ N END C B @ SW COR SPRING ST & CHERRY AVE 70FT S & 25FT W C/L INT	CY 7065
BASELINE (1975)	75.270	L&BN E CB 1FT S BCR @ NE COR CHERRY AVE & SPRING ST 72FT N & 50FT E C/L INT MKD (BM)	CY 7066
BASELINE (1975)	69.420	L B CITY MON IN WELL 10IN DN IN WK @ NE COR WARDLOW RD & ORANGE AVE 33FT E & 51FT N/O C/L INT MKD (BM NO 87)	CY 7067
BASELINE (1975)	68.864	LB CITY MON 21IN DN @ C/L INT ORANGE AVE & WARDLOW RD MKD (BM-USE W EDGE)	CY 7068
BASELINE (1975)	87.045	C L B MON IN WELL @ C/L INT WARDLOW RD & ATLANTIC AVE(S MON OF 2 MON) USE S EDGE @ ARROW	CY 7069
BASELINE (1975)	88.106	RAMSET W CB LONG BEACH BLVD 35FT N BCR 30FT W & 120FT N C/L INT WARDLOW RD & LONG BEACH BLVD	CY 7070
BASELINE (1975)	110.354	CS TRI MON 34FT W OF E CB LONG BEACH BLVD & 216FT S C/L INT ROOSEVELT RD & LONG BEACH BLVD MKD (B-9-RE 2177-2)	CY 7071
BASELINE (1975)	97.598	USC&GS MON FL 2FT W/O W CB LONG BEACH BLVD & 2FT N/O LIGHT PGST #409 20FT S & 36FT W C/L INT LONG BEACH BLVD & CCOUNTRY CLUB LN ( SO ENT) MKD ( A-780 1946)	CY 7072
BASELINE (1975)	92.216	CS TRI MON 10IN DN 200FT N C/L INT 44TH ST & LGNG BEACH BLVD 34FT W OF E CB MKD (CLEARWATER B-8 RE 2177 )	CY 7073

QUAD-YEAR	ELEV	DESCRIPTION (INCLUDE QUAD AND YEAR IN DESCRIPTION)	BM NUMBER
BASELINE (1975)	40.137	CS TRI MON IN WELL 2FT E/O C/L INT ARBOR ST TO THE W & LONG BEACH BLVD MKD (CLEARWATER A-7 RE 2177)	CY 7074
BELLFLWR (1980)	67.451	L&BN S CB CARSON ST 150FT E C/L UPRR R/W & 42FT S C/L CARSON ST 6FT E DR TO BOWLING ALLEY 44FT W/O C/L PROD DEEBOYER AVE	CY 7075
BASELINE (1975)	72.177	CS BR CAP 10IN DN 74FT W C/L MC NAB AVE & 5FT NLY OF N CB HAYFORD ST MKD (BM 9-1A RE 5869 1961)	CY 7078
BASELINE (1975)	61.620	L&BN 2FT E BCR @ NE COR ARTESIA BLVD & STUDEBAKER RD 81FT E & 42FT N C/L INT	CY 7080
BASELINE (1975)	61.141	L&BN 5FT N BCR @ SW COR ARTESIA BLVD & STUDEBAKER RD 43FT W & 72FT S C/L INT	CY 7081
BASELINE (1975)	36.010	CS MON 12IN DN 6FT W OF E CB 46FT N & 25FT E C/L INT PALO VERDE AVE & CENTRALIA ST MKD (BM 9-11 1951 RE 63)	CY 7086
BASELINE (1975)	42.809	L&BN 1FT E/O BCR @ NE COR CARSON ST & SAN ANSELINA AVE 54FT E & 40FT N/O C/L INT	CY 7087
BASELINE (1975)	44.094	CS MON FL IN WK 45FT E BCR @ NE COR LAKEWOOD BLVD & CARSON ST 40FT N & 108FT E C/L INT MKD (G 9 A RM NO 6 RE 63)	CY 7088
BASELINE (1975)	49.234	L&T S CB 24FT W/O C/L PROD OBISPO AVE & 40FT S C/L SOUTH ST	CY 7090
BASELINE (1975)	50.125	RDBM TAG S CB 38FT W BCR @ SW COR SOUTH ST & DOWNEY AVE 40FT S & 97FT W C/L INT	CY 7091
BASELINE (1975)	49.376	L&T E CB 50FT S BCR @ SE COR SOUTH ST & DOWNEY AVE 117FT S & 31FT E C/L INT	CY 7092
BASELINE (1975)	53.234	RDBM TAG W CB 3FT S BCR @ SW COR LAKEWOOD BLVD & SOUTH ST 80FT S & 45FT W C/L INT	CY 7093
BASELINE (1975)	55.073	L&BN W CB SERVICE RD 1FT S BCR @ SW COR HEDDA ST & LAKEWOOD BLVD 47FT S & 89FT W C/L INT MKD ( BM)	CY 7094
BASELINE (1975)	55.160	L&BRAD W CB SERVICE RD 1FT N BCR @ NW COR LAKEWOOD BLVD & HEDDA ST 47FT N & 89FT W C/L INT	CY 7095
BASELINE (1975)	56.438	L&BRAD W CB SERVICE RD 5FT N BCR @ SW COR LAKEWOOD BLVD & ASHWORTH ST 40FT S & 90FT W C/L INT	CY 7096

QUAD-YEAR	ELEV	D E S C R I P T I O N (INCLUDE QUAD AND YEAR IN DESCRIPTION)	BM NUMBER
BASELINE (1975)	56.053	FC BRS CAP FLUSH E CB SE COR LAKEWOOD BLVD & ASHWORTH ST 23FT S & 57FT E C/L INT MKD (FC BM 74-230 1946)	CY 7097
BASELINE (1975)	57.389	L&T N CB 17 W C/L PROD GRAYWOOD AVE 18FT N C/L ASHWORTH ST	CY 7098
BASELINE (1975)	58.493	FC BRS DISC E CB 5FT N BCR @ NE COR ASHWORTH ST & CLARK AVE 47FT N & 28FT E C/L INT MKD (FCBM 120-200)	CY 7100
BASELINE (1975)	58.099	L&BR N CB 17FT W/O C/L PROD LORELEI AVE 17FT N/O C/L ASHWORTH ST	CY 7101
BASELINE (1975)	58.061	L & BN 1FT E BCR @ SE COR LORELEI AVE & ASHWORTH ST 17FT S & 42FT E C/L INT MKD ( BM)	CY 7102
BASELINE (1975)	58.199	L&T N CB C/L PROD DUNROBIN AVE 20FT N C/L ASHWORTH ST	CY 7103
BASELINE (1975)	58.239	L&BN S CB 1 FT E BCR @ SE COR DUNROBIN AVE & ASHWORTH ST 41FT E & 20FT S C/L INT	CY 7104
BASELINE (1975)	56.348	L&T W CB 3FT S BCR @ SW COR PALO VERDE AVE & ALLINGTON AVE 70FT S & 25FT W C/L INT	CY 7106
BASELINE (1975)	48.550	L&T E CB 8FT N BCR @ NE COR PARAMOUNT BLVD & CANDLEWOOD ST 71FT N & 40FT E C/L INT	CY 7108
BASELINE (1975)	50.709	RDBM TAG E CB 1FT S BCR @ SE COR PARAMOUNT BLVD & SOUTH ST 76FT S & 40FT E C/L INT	CY 7109
SO GATE (1980)	136.262	L&BRAD 2FT S/O BCR @ NE COR FLORENCE AVE & OTIS AVE 50FT N & 20FT E/O C/L INT	CY 7146
SO GATE (1980)	137.207	L&BRAD 7FT S/O BCR @ SE COR FLORENCE AVE & OTIS AVE 55FT S & 20FT E/O C/L INT	CY 7147
SO GATE (1980)	141.027	L&BN N CB FLORENCE AVE 1FT E C B 4FT W BCR @ NW COR CALIFORNIA AVE (W OF RR TRACKS) & FLORENCE AVE 40FT N & 63FT W C/L INT	CY 7148
SO GATE (1980)	143.278	SPK&L 37FT W BCR @ NW COR FLORENCE AVE & STATE ST 35FT N & 80FT W C/L INT	CY 7149
SO GATE (1980)	151.487	CE TAG IN E CB 0.5FT N/O BCR @ NE COR MOUNTAIN VIEW & FLORENCE AVE 25FT E/O & 65FT N/O C/L INT	CY 7150
SO GATE (1980)	71.155	L&T E CB GIBSON AVE @ SE COR GIBSON AVE & ROSE-CRANS AVE 4FT S BCR IN DEP CB 20FT E & 72FT S C/L INT	CY 7191

QUAD-YEAR	ELEV	DESCRIPTION (INCLUDE QUAD AND YEAR IN DESCRIPTION)	BM NUMBER
SO GATE (1980)	71.522	SQ BR CAP IN CONC 4FT S BCR @ NW COR ROSECRANS AVE & GIBSON AVE 22FT W & 60FT N/O C/L INT 1FT BACK FROM FACE OF CB MKD (BM IAR 219)	CY 7192
SO GATE (1980)	92.724	PK IN N WK CF BR ON ROSECRANS AVE OVER LA RIVER @ E END 1FT N CB FACE 45FT N C/L & 0.2MI W ORANGE AVE	CY 7206
BELLFLWR (1980)	69.943	L&T E CB 8FT S BCR @ SE COR BELLFLOWER BLVD & FLOWER ST 60FT S & 30FT E C/L INT	CY 7281
BASELINE (1975)	178.120	RDBM TAG 38FT S BCR 104FT S & 36FT W C/L INT SLAUSON AVE & SANTA FE AVE	CY 7742
BASELINE (1975)	177.852	RDBM TAG 44FT S BCR 104FT S & 36FT E C/L INT SLAUSON AVE & SANTA FE AVE	CY 7743
BASELINE (1975)	176.729	RDBM TAG 35FT E BCR 35FT S & 112FT E C/L INT SLAUSON AVE & PACIFIC AVE	CY 7744
BASELINE (1975)	108.841	CS REF MON IN WELL 8IN DN @ SW COR PARAMOUNT BLVD & STEWART & GRAY RD 50FT S & 50FT W/O C/L INT 1FT BK OF WK MKD (RM 1-1960)	CY 7763
BASELINE (1975)	108.118	RDBM TAG 1FT S BCR @ SW COR PARAMOUNT BLVD & 1ST ALLEY S COLE ST 17FT S & 38FT W C/L INT	CY 7764
BASELINE (1975)	97.398	CS REF MON IN WELL 8IN DN @ SW COR PARAMOUNT BLVD & IMPERIAL HWY 46FT S & 55FT W C/L INT MKD(RM-4 BELL F 10A 1960)	CY 7766
BASELINE (1975)	72.948	RDBM TAG 8FT N BCR INTO CB RET @ SW COR PARAMOUNT BLVD & COMPTON BLVD 59FT S & 40FT W C/L INT	CY 7768
BASELINE (1975)	69.247	RDBM TAG 1FT E BCR @ SE COR COMPTON BLVD & GARFIELD AVE 32FT S & 76FT E C/L INT	CY 7772
BASELINE (1975)	69.146	RDBM TAG 2FT W BCR @ NW COR COMPTON BLVD & GARFIELD AVE 30FT N & 78FT W C/L INT	CY 7773
BASELINE (1975)	69.143	RDBM TAG NR ENT TO C B ON NE COR COMPTON BLVD & ORANGE AVE 70FT N & 18FT E C/L INT	CY 7774
BASELINE (1975)	154.635	BRASS MON FL ON C/L FLORENCE AVE & 4FT E C/L E BARREL ALAMEDA ST MKD (CE MON-USE NE COR)	CY 7775
SO GATE (1980)	72.558	RDBM TAG IN C B ON SW COR GARFIELD AVE & ROSECRANS AVE 42FT S & 100FT W C/L INT	CY 7783
BASELINE (1975)	75.613	L & T 40FT S BCR @ SW COR PARAMOUNT BLVD & ROSECRANS AVE 120FT S & 35FT W C/L INT	CY 7815

OUT

QUAD-YEAR	ELEV	DESCRIPTION (INCLUDE QUAD AND YEAR IN DESCRIPTION)	BM NUMBER
BASELINE (1975)	43.035	CS MCN FL 34FT W/O C/L ALAMEDA ST (W BBL) & 347FT S/O CTR LAUREL PARK RD MKD (COMPTON J6 1942) STEEL WITNESS POST 3FT UP 2FT E	CY 8404
BASELINE (1975)	26.864	CS MCN FL IN HDWL ON NW COR TYLER ST & ALAMEDA ST 90FT N & 72FT W C/L INT MKD (BM 5-37A 1970)	CY 8405
SO GATE (1980)	154.565	RDBM TAG 1FT S BCR @ SW COR OTIS AVE & 61ST ST 25FT S & 15FT W C/L INT	CY 8504
SO GATE (1980)	144.896	RDBM TAG 1FT E BCR @ SE COR OTIS AVE & GAGE AVE 30FT S & 34FT E C/L INT	CY 8505
SO GATE (1980)	144.818	RDBM TAG 3FT S BCR @ SW COR GAGE AVE & OTIS AVE 43FT S & 18FT W C/L INT	CY 8506
SO GATE (1980)	142.126	RDBM TAG 1.5FT N BCR @ NW COR OTIS AVE & BELL AVE 32FT N & 18FT W C/L INT	CY 8507
SO GATE (1980)	141.346	L&BRAD 3FT W/O BCR @ SW COR BELL AVE & OTIS AVE 18FT S & 32FT W C/L INT	CY 8508
BASELINE (1975)	33.767	RDBM TAG IN N CB 12FT W/O END & 19FT W/O SPRR TRKS 32FT N & 0.25 MI E/O C/L INT DOMINGUEZ ST & SANTA FE AVE	CY 8575
BASELINE (1975)	34.267	L & T IN N EDGE CONC BASE RR SIGNAL 18FT S & 0.25 MI E/O C/L INT DOMINGUEZ ST & SANTA FE AVE 13FT W/O SPRR TRKS	CY 8576
BASELINE (1975)	36.492	L & BR IN W CB 40FT WLY & 3FT SLY APPROX C/L INT 47TH ST & PACIFIC AVE	CY 8577
BASELINE (1975)	36.561	L & T IN SE COR LIGHT POST BASE #A-11 19FT N & 17FT E APPROX C/L INT 47TH ST & PACIFIC AVE	CY 8578
BASELINE (1975)	53.266	L & T IN E CB 26FT N & 35FT E/O C/L INT LONG BEACH BLVD & 46TH ST	CY 8579
BASELINE (1975)	54.889	L & BR IN W CB SER RD ON C/L PROD 46TH ST & 57FT E/O C/L INT @ LONG BEACH BLVD	CY 8580
BASELINE (1975)	94.439	L & BR NR CTR CB RET @ NE COR LONG BEACH BLVD & 44TH ST 27FT N & 27FT E C/L INT OF SERVICE RD	CY 8581
BASELINE (1975)	102.924	RAMSET IN CHIS SQ IN W CB 3FT S BCR @ SW COR LONG BEACH BLVD & SAN ANTONIO DR 37FT WLY & 90FT SLY C/L INT	CY 8582
BASELINE (1975)	110.266	RAMSET IN W CB 5FT S BCR @ SW COR LONG BEACH BLVD & ROOSEVELT RD 45FT S & 39FT W C/L INT	CY 8583



QUAD-YEAR	ELEV	DESCRIPTION (INCLUDE QUAD AND YEAR IN DESCRIPTION)	BM NUMBER
BASELINE (1975)	95.544	RDBM TAG 'IN W CB 5FT S DRWY TO BLDG #3711 35FT W & 53FT N APPROX C/L INT LONG BEACH BLVD & 37TH ST	CY 8584
BASELINE (1975)	93.499	L & SQ HD SCREW IN E CB 7FT S BCR @ SE COR LONG BEACH BLVD & 37TH ST 35FT E & 41FT S/O C/L INT	CY 8585
BASELINE (1975)	88.464	L & BR NR CTR CB RET @ SW COR WARDLOW RD & ATLANTIC AVE 34FT S & 34FT W/O C/L INT	CY 8586
BASELINE (1975)	80.449	RDBM TAG IN S CB 4FT W/O BCR @ SW COR WARDLOW RD & CALIFORNIA AVE 28FT S & 40FT W C/L INT	CY 8587
BASELINE (1975)	79.540	RDBM TAG IN E CB 6FT N ECR @ NE COR WARDLOW RD & CALIFORNIA AVE 47FT N & 16FT E/O C/L INT	CY 8588
BASELINE (1975)	63.505	RDBM TAG IN N CB 30FT E/O BCR @ NE COR WARDLOW RD & WALNUT AVE 28FT N & 79FT E/O C/L INT	CY 8590
BASELINE (1975)	54.494	L & BR IN W CB 40FT W & 30FT N C/L INT @ CHERRY AVE & 32ND ST	CY 8591
BASELINE (1975)	53.922	CITY OF L B MON IN WELL 7IN DN ON C/L CHERRY AVE 30FT N C/L 32ND ST	CY 8592
BASELINE (1975)	76.940	LACS MON FL IN WALK @ NW COR CHERRY AVE & SPRING ST 45FT N & 50FT W C/L INT MKD (BM 8-41B 1965)	CY 8593
BASELINE (1975)	58.052	L & BR IN E END CB 2FT W/O BCR @ SW COR SPRING ST & JUNIPERO AVE 46FT S & 61FT W/O C/L INT	CY 8594
BASELINE (1975)	57.083	L & BR IN S CB 1FT E/O BCR @ SE COR SPRING ST & JUNIPERO AVE 46FT S & 62FT E/O C/L INT	CY 8595
BASELINE (1975)	32.977	L & BN IN CONC NOSE ISL NR C/L SPRING ST 41FT W/O INT @ ENT TO U S A 19TH ARTY GROUP AVIATION SECT 4000 SPRING ST 0.1MI W/O SPRING ST UNDER PASS + L B AIRPORT RUNWAY MKD (BM)	CY 8596
BASELINE (1975)	30.823	L & BN IN CONC NOSE ISL NR C/L SPRING ST 20FT E/O INT @ ENT TO U S A 19TH ARTY GROUP AVIATION SECT 4000 SPRING ST 0.1MI W/O SPRING ST UNDER PASS + L B AIRPORT RUNWAY MKD (BM)	CY 8597
BASELINE (1975)	24.815	L & BR IN S CB 7FT W/O BCR @ SW COR SPRING ST & CLARK AVE E EDGE CB 43FT S & 77FT W C/L INT	CY 8598
BASELINE (1975)	23.849	L & BR IN N CB 7FT W/O BCR @ NW COR SPRING ST & RUTGERS AVE 42FT N & 43FT W/O C/L INT	CY 8599

QUAD-YEAR	ELEV	DESCRIPTION (INCLUDE QUAD AND YEAR IN DESCRIPTION)	BM NUMBER
BASELINE (1975)	24.954	L & BR IN SO CB 43FT S & 52FT W/O C/L INT SPRING ST & RUTGERS AVE	CY 8600
BASELINE (1975)	116.550	CS BM MON FL IN C B @ NW COR FIRESTONE BLVD & PARAMOUNT BLVD 125FT N & 41FT W C/L INT MKD (BM 7-88 1970)	CY 8713
BASELINE (1975)	115.813	RDBM TAG 1FT E BCR @ NE COR FIRESTONE BLVD & PARAMOUNT BLVD 38FT N & 78FT E C/L INT	CY 8714
BASELINE (1975)	117.255	RAM SET 40FT E C/L PARAMOUNT BLVD & 3FT S C/L PROC 4TH PL	CY 8748
BASELINE (1975)	117.328	CS MON IN WELL 8IN DN 1FT BK OF CB @ NW COR PARA MOUNT BLVD & 5TH ST 52FT N & 41FT W/O C/L INT MKD ( BM 7-98 1970 )	CY 8749
BASELINE (1975)	121.980	RDBM TAG 1FT S BCR @ SW COR PARAMOUNT BLVD & HARPER AVE 45FT S & 40FT W C/L INT	CY 8750
BELLFLWR (1980)	70.021	L & T 2FT S BCR @ SW COR BELLFLOWER BLVD & FLOWER ST 55FT S & 30FT W C/L INT	CY 8755
BASELINE (1975)	58.864	RDBM TAG 44FT N BCR @ NE COR BELLFLOWER BLVD & ASHWORTH ST 96FT N & 38FT E C/L INT	CY 8756
BASELINE (1975)	65.930	RDBM TAG 1FT S/O BCR @ SW COR ATLANTIC AVE & COMPTON BLVD 38FT W & 76FT S/O C/L INT	CY 8757
BELLFLWR (1980)	64.114	RDBM TAG 36FT N BCR @ NW COR ATLANTIC AVE & ALONDRA BL 112FT N & 42FT W C/L INT	CY 8758
BELLFLWR (1980)	64.435	RDBM TAG 1FT E BCR @ SE COR ATLANTIC AVE & ALONDRA BLVD 40FT S & 71FT E C/L INT	CY 8759
BELLFLWR (1980)	59.587	RAMSET 38FT W/O C/L ATLANTIC AVE & 61FT N/O C/L ATLANTIC PL (BETWEEN TWO C B)	CY 8760
BELLFLWR (1980)	59.837	CITY OF LONG BEACH BR MON FL @ NE COR ATLANTIC AVE & ATLANTIC PL 39FT E & 50FT N/O C/L INT MKD (BM 1028 1967) 2FT N/O BCR	CY 8761
BELLFLWR (1980)	55.896	CITY OF LONG BEACH MON IN WELL 12IN DN @ C/L INT ATLANTIC AVE & ARTESIA BLVD (USE NE EDGE) MKD (RE 3111 1959)	CY 8762
BELLFLWR (1980)	55.604	CITY OF LONG BEACH MON IN WELL 12IN DN @ PI ATLANTIC AVE 260FT S C/L ARTESIA BLVD	CY 8763
BELLFLWR (1980)	51.294	CITY OF LONG BEACH MON IN WELL 24IN DN @ C/L INT ATLANTIC AVE & HARDING ST	CY 8764

QUAD-YEAR	ELEV	DESCRIPTION (INCLUDE QUAD AND YEAR IN DESCRIPTION)	BM NUMBER
BELLFLWR (1980)	63.564	USC & GS MON FL IN S WALL WEST ABUT OF UPRR BRIDGE OVER ATLANTIC AVE MKD (C789 1946) 5FT S/O C/L RR TRACKS	CY 8768
BELLFLWR (1980)	56.052	RDBM TAG 3FT N BCR @ NW COR ATLANTIC AVE & DEL AMO BLVD 65FT N & 40FT W C/L INT	CY 8769
BELLFLWR (1980)	60.235	L & BRAD 13FT S BCR @ SW COR ATLANTIC AVE & DEL AMO BLVD 73FT S & 40FT W C/L INT	CY 8770
BELLFLWR (1980)	61.004	CITY OF LONG BEACH MON FL 5FT S BCR @ SW COR DEL AMO BLVD & GRANGE AVE 70FT S & 30FT W/O C/L INT MKD (BM 255 1965)	CY 8771
BASELINE (1975)	46.786	L & BRAD 15FT W BCR IN DEPRESSED CB @ SW COR DEL AMO BL & PARAMOUNT BL 42FT S & 82FT W C/L INT	CY 8775
BASELINE (1975)	47.097	CSBM MON FL @ SW COR DEL AMO BL & PARAMOUNT BL 124FT S & 39FT W C/L INT MKD (BM 33-5A 1970)	CY 8776
BELLFLWR (1980)	55.235	RDBM TAG 2FT W BCR @ SW COR ARTESIA BL & SUSANA RD 42FT S & 83FT W C/L INT	CY 8777
BELLFLWR (1980)	55.181	RAMSET 4FT E BCR @ SE COR ARTESIA BL & SUSANA RD 42FT S & 76FT E C/L INT	CY 8778
BELLFLWR (1980)	53.769	RDBM TAG 2FT W BCR @ SW COR ARTESIA BL & BUTLER AVE 42FT S & 40FT W C/L INT	CY 8779
BELLFLWR (1980)	53.771	RDBM TAG 2FT E BCR @ SE COR ARTESIA BL & BUTLER AVE 42FT S & 40FT E C/L INT	CY 8780
BELLFLWR (1980)	53.525	RAMSET 0.7FT S BCR INTO RET @ NW COR ARTESIA BL & ORANGE AVE 65FT N & 33FT W C/L INT	CY 8781
BELLFLWR (1980)	53.839	RAMSET 9FT E BCR @ SE COR ARTESIA BLVD & ORANGE AVE 42FT S & 58FT E C/L INT	CY 8782
BELLFLWR (1980)	54.791	CITY OF LONG BEACH MON FL @ SW COR ARTESIA BL & CHERRY AVE 43FT S & 63FT W C/L INT MKD (BM 150 1970)	CY 8783
BELLFLWR (1980)	54.694	RAMSET 1FT E BCR @ SE COR ARTESIA BLVD & CHERRY AVE 42FT S & 62FT E C/L INT	CY 8784
BELLFLWR (1980)	26.871	CS MON IN WELL 6IN DN 32FT W/O C/L CHARLEMAGNE & ON C/L WORDLOW RD MKD (BM 32-12 1953)	CY 8794
BELLFLWR (1980)	32.691	CS MON IN WELL @ NE COR CHARLEMAGNE AVE & CONANT ST 29FT N & 136FT E C/L INT MKD (BM 32-11 1953)	CY 8795

QUAD-YEAR	ELEV	DESCRIPTION (INCLUDE QUAD AND YEAR IN DESCRIPTION)	BM NUMBER
BASELINE (1975)	127.689	L & T 28FT E C/L ALAMEDA ST ON C/L PROD 85TH ST	CY 8797
BASELINE (1975)	58.361	L & T 2FT N BCR @ NW COR ASHWORTH ST & WOODRUFF AVE 48FT N & 38FT W C/L INT	CY 8798
BASELINE (1975)	57.073	RDBM TAG 1FT S BCR @ SW COR ASHWORTH ST & GRAYWOOD AVE 44FT S & 15FT W C/L INT	CY 8800
BASELINE (1975)	49.081	CITY OF LONG BEACH MON IN WELL 8IN DN @ C/L INT PARAMOUNT BLVD & 55TH WAY ( USE N EDGE)	CY 8801
BASELINE (1975)	48.120	RDBM TAG 1FT W BCR @ SW COR PARAMOUNT BLVD & CANDLEWOOD ST 32FT S & 77FT W C/L INT	CY 8802
BASELINE (1975)	55.720	RDBM TAG 7FT S BCR @ SW COR PARAMOUNT BLVD & CENTRALIA AVE 53FT S & 76FT W C/L INT	CY 8803
BASELINE (1975)	44.528	RAMSET 45FT N BCR @ NE COR CARSON ST & LAKEWOOD BLVD 106FT N & 42FT E C/L INT	CY 8804
BASELINE (1975)	38.447	CITY OF LONG BEACH MON FL @ NE COR CLARK AVE & CARSON ST 42FT N & 54FT E C/L INT MKD ( CLB 555 1970)	CY 8805
BASELINE (1975)	42.531	RDBM TAG 1FT W BCR @ NW COR CARSON ST & SAN ANSELINA AVE 40FT N & 45FT W C/L INT	CY 8806
BASELINE (1975)	69.261	RDBM TAG IN E CB 2FT N/O BCR @ NE COR STUDEBAKER RD & 166TH ST 42FT E/O & 72FT N/O C/L INT	CY 8808
BASELINE (1975)	50.692	LACS MON FL @ S END OF CB IN W CB 45FT N/O BCR @ NW COR STUDEBAKER RD & SOUTH ST 43FT W & 122FT N/O C/L INT MKD (BM 9-8C 1970)	CY 8810
BASELINE (1975)	50.454	RDBM TAG IN S CB 2FT W/O BCR @ SW COR STUDEBAKER RD & SOUTH ST 42FT S & 75FT W/O C/L INT	CY 8811
BASELINE (1975)	51.098	RDBM TAG IN SO CB 2FT W/O BCR @ SE COR SOUTH ST & PALO VERDE AVE 42FT S & 65FT E/O C/L INT	CY 8812
BASELINE (1975)	47.908	L & T IN E CB 2FT S/O BCR @ SE COR PALO VERDE AVE & CANDLEWOOD ST 75FT S & 30FT E/O C/L INT	CY 8813
BASELINE (1975)	26.521	RDBM TAG IN S CB 1FT W/O BCR @ SE COR PALO VERDE AVE & WARDLOW RD 40FT S & 64FT E/O C/L INT	CY 8814
BASELINE (1975)	44.487	LACS MON FL IN C B @ NW COR DEL AMO BLVD & PALO VERDE AVE 43FT N & 103 W C/L INT MKD (BM 9-1CA 1965)	CY 8815

QUAD-YEAR	ELEV	DESCRIPTION (INCLUDE QUAD AND YEAR IN DESCRIPTION)	BM NUMBER
LAKWOOD (1980)	52.594	LACS MON IN WELL 8IN DN @ NE COR CLARK AVE & SOUTH ST 53FT N & 57FT E C/L INT MKD (CLEARWATER H 5 RM 2)	CY 8819
LAKWOOD (1980)	54.554	LAFC MON FL 36FT E BCR @ NE COR BELLFLOWER BL & SOUTH ST 46FT N & 114FT E C/L INT MKD (BM 4-503 A 1946)	CY 8824
LAKWOOD (1980)	54.451	RDBM TAG 0.5FT W BCR INTO RET @ SE COR BELLFLOWER BL & SOUTH ST 46FT S & 75FT E C/L INT	CY 8825
LAKWOOD (1980)	53.343	RDBM TAG 44FT W BCR @ SW COR SOUTH ST & WOODRUFF AVE 40FT S & 116FT W C/L INT	CY 8827
LAKWOOD (1980)	53.317	RDBM TAG 1FT E BCR @ SE COR SOUTH ST & WOODRUFF AVE 40FT S & 76FT E C/L INT	CY 8828
LAKWOOD (1980)	52.730	L & BRAD 38FT N/O SOUTH ST & ON C/L PROD SNOWDEN AVE	CY 8829
BASELINE (1975)	142.419	L & CITY ENGR TAG IN CTR OF CB RET @ SW COR TELEGRAPH RD & PARAMOUNT BLVD 50FT W & 51FT S/O C/L INT	CY 9211
BASELINE (1975)	153.384	CS MON FL 32FT N/O C/L TELEGRAPH RD & 23FT E/O E END BRIDGE OVER RIO HONDO MKD ( BELL J-4A NO 2 1972 )	CY 9212
BASELINE (1975)	144.487	LACE MON FL IN E END CATCH BASIN 21FT E/O BCR @ NE COR SLAUSON AVE & MALT AVE 86FT E & 41FT N/O C/L INT	CY 9213
BASELINE (1975)	144.107	RD BM TAG IN CONC CB 3FT W/O BCR @ NW COR SLAUSON AVE & MALT AVE 52FT W & 40FT N/O C/L INT	CY 9214
BASELINE (1975)	138.588	SPK IN CONC CB 5FT W/O BCR @ NW COR SLAUSON AVE & BOXFORD AVE 40FT N & 70 FT W/O C/L INT MKD ( SD 3136 )	CY 9215
BASELINE (1975)	135.648	CS BM MON @ BK OF CB 40FT N/O C/L SLAUSON AVE 45FT E/O BLDG NO 6045 ( FLUOR CORP) 0.2 MI W/O C/L BOXFORD AVE MKD ( BM 4-19B 1968 )	CY 9216
BASELINE (1975)	139.669	CS MON UP 1IN @ W P/L OF CITY OF COMMERCE FIRE STA NO 13 50FT S/O C/L SLAUSON AVE & 0.25MI W/O C/L EASTERN AVE MKD ( CO SUR RE 329 ) USE N EDGE	CY 9218
BASELINE (1975)	142.965	RD BM TAG IN CONC CB 2FT E/O BCR @ NE COR SLAUSON AVE & HELIOTROPE AVE 36FT N & 37FT E/O C/L INT	CY 9219

QUAD-YEAR	ELEV	DESCRIPTION (INCLUDE QUAD AND YEAR IN DESCRIPTION)	BM NUMBER
BASELINE (1975)	143.088	RD BM TAG IN CONC CB 2FT W/O BCR @ NW COR SLAUSON AVE & HELICTROPE AVE 36FT N & 37FT W/O C/L INT	CY 9220
BASELINE (1975)	156.838	RD BM TAG IN CONC CB 2FT E/O BCR @ NE COR SLAUSON AVE & GIFFORD AVE 33FT E & 35FT N/O C/L INT	CY 9221
BASELINE (1975)	157.199	RD BM TAG IN CONC CB 2FT W/O BCR @ NW COR SLAUSON AVE & GIFFORD AVE 32FT W & 35FT N/O C/L INT	CY 9222
BASELINE (1975)	166.020	RD BM TAG IN CONC CB 2FT W/O BCR @ NW COR SLAUSON AVE & DOWNEY RD 54FT W & 36FT N C/L INT	CY 9223
BASELINE (1975)	166.148	L&CS TAG IN CONC CB 13FT E/O BCR @ NE COR SLAUSON AVE & BOYLE AVE 6FT E & 35FT N/O C/L INT	CY 9224
BASELINE (1975)	173.716	RD BM TAG IN CONC CB 2FT E/O BCR @ NE COR SOTO ST & SLAUSON AVE 65FT E & 35FT N/O C/L INT	CY 9225
BASELINE (1975)	176.870	CS MON IN WELL DN 8IN NEAR C/L SLAUSON AVE 15FT W/O C/L PACIFIC AVE MKD ( LA CO SUR CONTROL SYS TRAVERSE STA WATTS J-2B RE4233 1938 )	CY 9226
BASELINE (1975)	68.276	CS MON IN WELL 1FT BK OF WK @ NE COR ALONDRA BLVD & CLARK AVE 55FT N & 52FT E/O C/L INT	CY 9285
BASELINE (1975)	69.639	LS TAG IN CB 11FT W/O BCR @ NW COR ALONDRA BLVD & VIRGINIA AVE 54FT W & 40FT N/O C/L INT ( MKD LS 2428 )	CY 9286
BASELINE (1975)	69.183	RAMSET CTR CB RET @ NE COR ALONDRA BLVD & LAKEWOOD BLVD 42FT N & 57FT E/O C/L INT	CY 9287
BASELINE (1975)	68.079	L&BR 2FT E/O BCR @ NW COR ALONDRA BLVD & PITTS AVE 42FT N & 39FT W/O C/L INT	CY 9288
BASELINE (1975)	66.223	CS MON IN WELL 1FT BK OF WK @ NE COR ALONDRA BL & DOWNEY AVE 51FT N & 59FT E/O C/L INT MKD ( BM 6-10A )	CY 9289
BASELINE (1975)	68.953	L&BN 6FT N/O BCR @ NW COR ALONDRA BLVD & ORIZABA AVE 73FT N & 28FT W/O C/L INT	CY 9290
BASELINE (1975)	68.385	L&BR IN CTR OF CB RET @ NE COR ALONDRA BLVD & PARAMOUNT BLVD 54FT N & 51FT E/O C/L INT	CY 9291
BASELINE (1975)	68.134	CS MON FL IN S WALL CB @ NW COR PARAMOUNT BLVD & ALONDRA BLVD 42FT W & 120FT N/O C/L INT MKD ( BM 6-11B 1975 )	CY 9292

QUAD-YEAR	ELEV	DESCRIPTION (INCLUDE QUAD AND YEAR IN DESCRIPTION)	BM NUMBER
BASELINE (1975)	72.392	CS MON 1FT BK OF WK CTR OF CB RET @ SW COR PARAMOUNT BLVD & COMPTON BLVD 56FT W & 50FT S/O C/L INT MKD ( BM 6-13A 1970 )	CY 9293
BASELINE (1975)	109.576	L&T 1FT S/O BCR @ SE COR PARAMOUNT BLVD STEWART & GRAY RD 38FT E & 76FT S/O C/L INT	CY 9295
BASELINE (1975)	103.852	L&FC TAG IN CTR OF CB RET @ NW COR PARAMOUNT BLVD & QUILL DR 29FT N & 47FT W/O C/L INT	CY 9296
BASELINE (1975)	90.152	L&BD 1FT S/O BCR @ SE COR PARAMOUNT BLVD & ADDREE AVE 38FT E & 44FT S/O C/L INT	CY 9298
BASELINE (1975)	72.275	L&BN IN N CB COMPTON BLVD 32FT N & 50FT W/O C/L INT VERMONT AVE	CY 9301
BASELINE (1975)	69.682	L&BD CTR CB RET @ SE COR COMPTON BLVD & MINNESOTA AVE 36FT S & 43FT E/O C/L INT	CY 9302
BASELINE (1975)	69.846	L&BD IN N CB COMPTON BLVD 32FT N & 39FT W/O C/L INT MINNESOTA AVE	CY 9303
BASELINE (1975)	68.803	CSBM MON IN WELL 1FT BK OF WK @ W EDGE OF DRIVEWAY TO FIRE STATION NO 31 210FT E & 41FT N/O C/L INT COMPTON BLVD & GARFIELD AVE MKD ( BM 6-14A )	CY 9304
BASELINE (1975)	69.553	L&T N CB COMPTON BLVD 30FT N & 58FT E/O C/L INT TEXACO AVE	CY 9305
BASELINE (1975)	69.703	L&T 1FT W/O BCR @ SW COR COMPTON BLVD & TEXACO AVE 61FT W & 32FT S/O C/L INT	CY 9306
BASELINE (1975)	68.031	CSBM MON IN WELL 3FT W/O CB FACE 59FT S & 34FT W/O C/L INT COMPTON BLVD & ORANGE AVE MKD ( BM 6-15A )	CY 9307
BASELINE (1975)	88.380	LAFC MON IN E ABUT @ SE COR COMPTON BLVD & BR OVER LA RIVER 32FT S C/L MKD ( BM 4-26 )	CY 9308
BASELINE (1975)	68.675	L&T CTR CB RET @ NE COR GIBSON AVE & COMPTON BLVD 24FT E & 35FT N/O C/L INT	CY 9309
BASELINE (1975)	68.482	L&BN IN S CB COMPTON BLVD 41FT S & 11FT W/O C/L INT PROD HARRIS AVE TO THE N	CY 9311
BASELINE (1975)	68.406	L&BN 1FT W/O BCR @ NW COR COMPTON BLVD & HARRIS AVE TO THE N 36FT W & 32FT N/O C/L INT	CY 9312
BASELINE (1975)	71.327	RDBM TAG 5FT W BCR INTO RET @ SW COR ROSECRANS AVE & ALAMEDA ST E BBL 210FT S & 33FT W/O C/L	CY 9313

QUAD-YEAR	ELEV	DESCRIPTION (INCLUDE QUAD AND YEAR IN DESCRIPTION)	BM NUMBER
BASELINE (1975)	78.029	RAMSET 2FT S BCR @ SE COR ALAMEDA ST E BBL 24FT E/O & 52FT S/C C/L INT BANNING ST	CY 9314
BASELINE (1975)	87.522	RAMSET IN CTR CB RET @ SE COR ALAMEDA ST E BBL & LYNWOOD RD 20FT E & 32FT S/O C/L INT	CY 9315
BASELINE (1975)	112.872	RDBM TAG 4FT S BCR @ SW COR E BBL ALAMEDA ST 18FT E & 37FT S/C C/L INT KANSAS AVE	CY 9317
BASELINE (1975)	118.035	RDBM TAG 4FT S BCR @ SE COR E BBL ALAMEDA ST IN NLY WALL C B 19FT E & 45FT S C/L INT SOUTHERN AV	CY 9318
BASELINE (1975)	124.806	L&T 6FT S BCR IN CONC CB @ NE COR ALAMEDA ST & FIRESTONE BLVD 29FT E & 47FT N/O C/L INT	CY 9319
BASELINE (1975)	139.716	CS TAG IN CTR CONC C B @ SW COR E BBL ALAMEDA ST & NADEAL ST 21FT E & 34FT S/C C/L INT	CY 9320
BASELINE (1975)	138.826	CS MON IN WELL 30FT E & 15FT S/C APPROX C/L INT W BBL ALAMEDA ST & NADEAU ST USE W EDGE	CY 9321
BASELINE (1975)	149.288	L&T 28FT E C/L ALAMEDA ST NEAR C/L PRGD 76TH ST	CY 9322
BASELINE (1975)	161.108	L&T 20FT W C/L E BBL ALAMEDA ST CN OR NEAR C/L PRGD ZOE AVE	CY 9323
BASELINE (1975)	166.051	CS MON FL IN CONC BASE SIGNAL LIGHT 27FT E & 45 FT S C/L INT W BBL ALAMEDA ST & GAGE AVE MKD ( BM 5-75 1964)	CY 9324
BASELINE (1975)	91.787	LAFC MON FL IN WK @ SW END BRDG NO B977 OVER SAN GABRIEL RIVER 41FT S/C C/L ALONDRA BLVD MKD (BM C75-00877 1974)	CY 9375
BASELINE (1975)	89.829	PK N IN CONC CB @ SE END BRDG NO B977 OVER SAN GABRIEL RIVER 37FT S/C C/L ALONDRA BLVD	CY 9376
BASELINE (1975)	73.027	CS MON FL IN S WALL C B @ NW COR STUDEBAKER RD & ALONDRA BLVD 43FT W & 110FT N/O C/L INT MKD (BM 9-3C)	CY 9377
BASELINE (1975)	72.026	L&BR CTR OF CB RET @ SE COR ALONDRA BLVD & STUDEBAKER RD 53FT E & 53FT S/O C/L INT	CY 9378
BASELINE (1975)	70.521	RDBM TAG 3FT S/O BCR @ SE COR STUDEBAKER RD & ENTR RD TO CERRITOS COLLEGE RECEIVING 50FT S & 42FT E/C C/L INT	CY 9379
BASELINE (1975)	68.595	CS BM MON FL IN S WALL C B @ SW COR STUDEBAKER RD & 166TH ST 69FT S & 43FT W/O C/L INT MKD (BM 9-4A 1975)	CY 9380

OUT



QUAD-YEAR	ELEV	DESCRIPTION (INCLUDE QUAD AND YEAR IN DESCRIPTION)	BM NUMBER
BASELINE (1975)	63.839	RDBM TAG IN S WALL C B @ NE COR STUDEBAKER RD & ON RAMP TO ARTESIA FWY (91) ON S SIDE FWY 43FT N & 43FT E/C C/L INT	CY 9381
BASELINE (1975)	61.100	CS BM MON FL IN E WALL C B @ NW COR ARTESIA BLVD & STUDEBAKER RD 47FT N & 151FT W/O C/L INT 75FT W/O BCR MKD (BM 9-6C 1965)	CY 9382
BASELINE (1975)	55.814	CS BM MON FL IN S WALL C B 5FT N/O BCR @ NW COR STUDEBAKER RD & 183RD ST 69FT N & 43FT W/C C/L INT MKD (BM 9-7B 1975)	CY 9383
BASELINE (1975)	55.792	L&T CTR CB RET @ SE COR STUDEBAKER RD & 183RD ST 50FT S & 54FT E/C C/L INT	CY 9384
BASELINE (1975)	69.732	LAFC MGN FL IN WK @ W END BRDG NC 8972 OVER SAN GABRIEL RIVER 42FT S/O C/L SOUTH ST MKD (BM 074-02797 1974)	CY 9385
BASELINE (1975)	39.803	RDBM TAG 3FT S/O BCR @ SW COR PALO VERDE AVE & ARBOR RD 30FT W & 58FT S/O C/L INT	CY 9386
BASELINE (1975)	25.209	CITY OF LONG BEACH MGN IN WELL @ C/L INT PALO VERDE AVE & WARDLOW RD MKD (C L B 1958 RE 3111)	CY 9387
BASELINE (1975)	24.072	RAMSET 1FT S/O BCR @ SE COR PALO VERDE AVE & METZ ST 30FT E & 57FT S/O C/L INT	CY 9388
BASELINE (1975)	25.388	LAFC MON FL IN CB 52FT S/C BCR @ SW COR LOS COYOTES DIAG & SPRING ST 137FT S & 37FT W/C C/L INT MKD (BM 120-81 1961)	CY 9389
BASELINE (1975)	23.078	LAFC MGN FL IN CB 75FT S/G BCR @ SW COR BELLFLOWER BLVD & SPRING ST 40FT W & 140FT S/C C/L INT MKD (BM 120-82 1961)	CY 9390
BASELINE (1975)	22.969	CITY OF LONG BEACH MGN IN WELL 8IN DN @ C/L INT SPRING ST & CHARLEMAGNE AVE MKD (C L B 1968 KE 3111)	CY 9391
BASELINE (1975)	12.522	CS MGN IN VERT FACE WALL @ SE COR SPRING ST UNDERPASS & MAIN RWY OF L B AIRPORT 34FT S/C C/L SPRING ST 3FT ABOVE CB MKD (BM 8-39B 1965-USE CTR PUNCH MARK)	CY 9392
BASELINE (1975)	13.468	CS BM MGN IN VERT FACE WALL @ NW COR SPRING ST UNDERPASS & MAIN RWY OF L B AIRPORT 34FT N/C C/L SPRING ST 3FT ABOVE CB MKD (BM 8-396 1965-USE CTR PUNCH MARK)	CY 9393
BASELINE (1975)	53.634	L&T S WALL C B 34FT N/O BCR @ NW COR CHERRY AVE & WARDLOW RD 88FT N & 40FT W/O C/L INT	CY 9394

QUAD-YEAR	ELEV	DESCRIPTION (INCLUDE QUAD AND YEAR IN DESCRIPTION)	BM NUMBER
BASELINE (1975)	64.295	L&BR 17FT W/O BCR @ NW COR WARDLOW RD & WALNUT AVE 50FT W & 28FT N/C C/L INT	CY 9395
BASELINE (1975)	29.292	L&BN @ BCR @ SE COR PALO VERDE AVE & HARCO ST 30FT E & 58FT S/O C/L INT MKD ( KN 233)	CY 9396
BASELINE (1975)	54.508	L&RCE TAG NO 12795 1FT N/C BCR @ NE COR PALO VERDE AVE & ANDY ST 55FT N & 32FT E/O C/L INT	CY 9397
BASELINE (1975)	49.700	L&T 9FT W BCR @ NW COR CARSON ST & LAKEWOOD DR 50FT W & 35FT N C/L INT	CY 9399
BASELINE (1975)	39.870	L&BR CTR CB RET @ SW COR FACULTY AVE & CARSON ST 33FT W & 48FT S C/L INT	CY 9400
BASELINE (1975)	38.302	PK & L NR S END E ABUT CONC BR 50FT S C/L CARSON ST & 500FT E C/L CLARK AVE	CY 9401
BELLFLWR (1980)	67.284	CITY OF LONG BEACH MCN 1FT BK/C CB @ NE COR CARSON ST & CHERRY AVE 7FT W/O BCR 45FT N & 77FT E/O C/L INT MKD (CLB BM 444 1972)	CY 9416
BELLFLWR (1980)	67.637	L&BR CTR CB RET @ SW COR CARSON ST & CHERRY AVE 50FT S & 60FT W/O C/L INT	CY 9417
BELLFLWR (1980)	56.212	CITY OF LONG BEACH MCN FL 1FT N/C BCR @ NE COR PARAMOUNT BLVD & 63RD ST 40FT N & 40FT E C/L INT MKD (LBBM 1172 1966)	CY 9419
BELLFLWR (1980)	61.339	RAMSET 12FT E/O BCR @ SE COR PARAMOUNT BLVD & 68TH ST 69FT E & 20FT S/O C/L INT	CY 9420
BELLFLWR (1980)	60.565	RDBM TAG 2FT E/O BCR @ NE COR DEL AMO BLVD & ORANGE AVE 42FT N & 50FT E/O C/L INT	CY 9432
BELLFLWR (1980)	27.425	RDBM TAG IN S WALL CATCH BASIN 7FT N/O BCR @ NW COR CHARLEMAGNE AVE & WARDLOW RD 18FT W & 73FT N/O C/L INT	CY 9434
BELLFLWR (1980)	33.791	L&T 0.5 W/O BCR @ NW COR CONANT ST & CHARLEMAGNE AVE 50FT W & 28FT N/C C/L INT	CY 9435
BELLFLWR (1980)	37.343	L&T IN N CB NR CTR OF CURVE CHARLEMAGNE AVE & PARKCREST ST CN PROD OF W CB CHARLEMAGNE AVE & 5FT S/O C/L PROD PARKCREST ST	CY 9436
BELLFLWR (1980)	37.460	L&N 3FT E/O BCR @ SW COR PARKCREST ST & CHARLEMAGNE AVE 15FT S & 77FT W/O C/L INT	CY 9437
BASELINE (1975)	38.314	L&BR CTR CB RET @ SW COR CARSON ST & CLARK AVE 34FT W & 49FT S/O C/L INT	CY 9438

QUAD-YEAR	ELEV	DESCRIPTION (INCLUDE QUAD AND YEAR IN DESCRIPTION)	BM NUMBER
BASELINE (1975)	55.653	RDBM TAG 1FT W/O C B SO CB SERVICE RD CARSON ST @ LEVELSIDE AVE 60FT N & 5FT E C/L PROD	CY 9534
BASELINE (1975)	55.747	RDBM TAG IN N CB SERVICE RD CARSON ST 3FT E/O C B 83FT N & 44FT W/O C/L INT LEVELSIDE AVE	CY 9535
BASELINE (1975)	60.346	RD TAG @ NE COR CARSON ST & PARAMGUNT BLVD 79FT N & 42FT E/O C/L INT 1FT N/O BCR	CY 9536
BASELINE (1975)	60.577	RD TAG @ SW COR CARSON ST & PARAMOUNT BLVD 42FT S & 68FT W/O C/L INT 1FT W/O BCR	CY 9537
BASELINE (1975)	22.705	RDBM TAG IN W CB WOODRUFF AVE @ SW COR SPRING ST 84FT S & 44FT W C/L INT	CY 9538
BASELINE (1975)	22.791	RDBM TAG IN E CB WOODRUFF AVE @ SE COR SPRING ST 84FT S & 44FT E C/L INT	CY 9539
BASELINE (1975)	21.546	RDBM TAG 1FT W BCR @ NW COR SPRING ST & PALC VERDE AVE 42FT N & 58FT W C/L INT	CY 9540
BASELINE (1975)	22.150	RDBM TAG 1FT E BCR @ NE COR SPRING ST & PALC VERDE AVE 42FT N & 58FT E C/L INT	CY 9541
BELLFLWR (1980)	52.755	RDBM TAG IN W/LY CB SERVICE RD 10FT N/O BCR @ NE COR C B 65FT N & 86FT W/O C/L INT ATLANTIC AVE & HARDING ST	CY 9646
BELLFLWR (1980)	49.721	RDBM TAG IN S/WLY CCR CONC PAD 91FT E & 88FT N/O C/L INT ATLANTIC AVE & SOUTH ST	CY 9647
BELLFLWR (1980)	48.924	RDBM TAG IN WALK TO BANK 48FT W & 87FT N/O C/L INT ATLANTIC AVE & SOUTH ST	CY 9648
BASELINE (1975)	98.457	RDBM TAG 2FT E/O BCR @ NE COR IMPERIAL HWY & PARAMOUNT BLVD 67FT E & 40FT N/O C/L INT	CY 9658
SO GATE (1980)	142.760	RDBM TAG IN CB 1FT E/O BCR @ SE COR FLORENCE AVE & STATE ST 35FT S & 49FT E/O CL INT	CY 9724
SO GATE (1980)	155.273	RDBM TAG W CB 20FT N/O BCR @ NW COR OTIS AVE & 61ST ST 44FT N & 15FT W/O C/L INT	CY 9727
SC GATE (1980)	71.873	L&T IN CB 14FT N/O BCR INTO RET @ SW COR ROSECRANS AVE & CRANGE AVE 52FT S & 23FT W/O C/L INT	CY 9733
BASELINE (1975)	132.865	RD BM TAG 1FT N/O C F @ E END C B 118FT W/O ENT TO U S STEEL CO 40FT N/O C/L SLAUSON AVE & 0.2 MILE E/O EASTERN AVE	CY 9761

QUAD-YEAR	ELEV	DESCRIPTION (INCLUDE QUAD AND YEAR IN DESCRIPTION)	BM NUMBER
BASELINE (1975)	135.080	RD BM TAG @ SO END C B 1FT E/O CB 43FT E/O C/L EASTERN AVE & 84FT N/O C/L SLAUSON AVE	CY 9762 A
BASELINE (1975)	135.458	RD BM TAG E END C B 15FT W/O BCR 96FT W/O C/L EASTERN AVE & 38FT S/O SLAUSON AVE	CY 9763
BASELINE (1975)	148.801	RDBM TAG S CB 1FT W/O BCR @ SW COR SLAUSON AVE & ATLANTIC AVE 41FT S & 51FT W/O C/L INT	CY 9942
BELLFLWR (1980)	44.122	RDBM TAG IN CB 2FT N/O BCR 33FT E/O C/L ATLANTIC AVE & 37FT S/O C/L MARKET ST	CY 10059
BELLFLWR (1980)	44.233	CITY OF LONG BEACH BM MON FL 1FT BACK OF CB 5FT S/O BCR 34FT W/O C/L ATLANTIC AVE & 44FT S/O C/L MARKET ST MKD (CLB 17065 BM 140 RESET 1978)	CY 10060
BELLFLWR (1980)	55.231	CITY OF LONG BEACH BM MON FL 1FT BACK OF CB 1FT W/O BCR 58FT N/O C/L DEL AMO BLVD & 108FT W/O C/L CHERRY AVE MKD (CLB BM 1979)	CY 10061
BELLFLWR (1980)	55.938	L&T IN CB 55FT E/O BCR 42FT N/O C/L DEL AMO BLVD & 152FT E/O C/L CHERRY AVE MKD (BM)	CY 10062
BELLFLWR (1980)	64.668	LAFC BM MON FL 44FT S/O BCR 42FT E/O C/L BELLFLOWER BLVD & 111FT S/O C/L ARTESIA BLVD MKD (FCBM 74-20 C 1946)	CY 10063
BASELINE (1980)	23.151	CITY OF LONG BEACH MON FL 1FT BACK OF CB 42FT N/O C/L SPRING ST & 44FT W/O C/L CHARLEMAGNE AVE 8FT W/O BCR MKD (RE 3111 1033 CLB 1969)	CY 10064
SO GATE (1980)	155.439	L&BN 8FT E/O BCR 35FT S/O C/L FLORENCE AVE & 55FT E/O C/L SANTA FE AVE @ E END C B	CY 10065
SO GATE (1980)	71.892	L&T CTR CB RET 52FT S/O C/L ROSECRANS AVE & 24FT E/O C/L ORANGE AVE	CY 10066
SO GATE (1980)	72.730	RDBM TAG 2FT E/O BCR 42FT S/O C/L ROSECRANS AVE & 75FT E/O C/L GARFIELD AVE	CY 10067
BASELINE (1975)	38.745	L&BR MCR SW COR 46FT W/O C/L ALAMEDA ST ( W BARREL) & 55FT S/O C/L DEL AMO BLVD	CY 10101
BASELINE (1975)	38.073	L&BR MCR NE COR 45FT E/O C/L ALAMEDA ST ( W BARREL) & 55FT N/O C/L DEL AMO BLVD	CY 10102